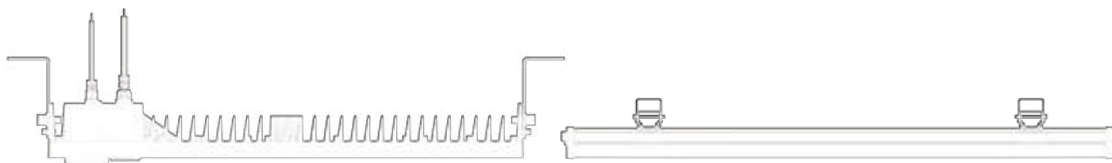
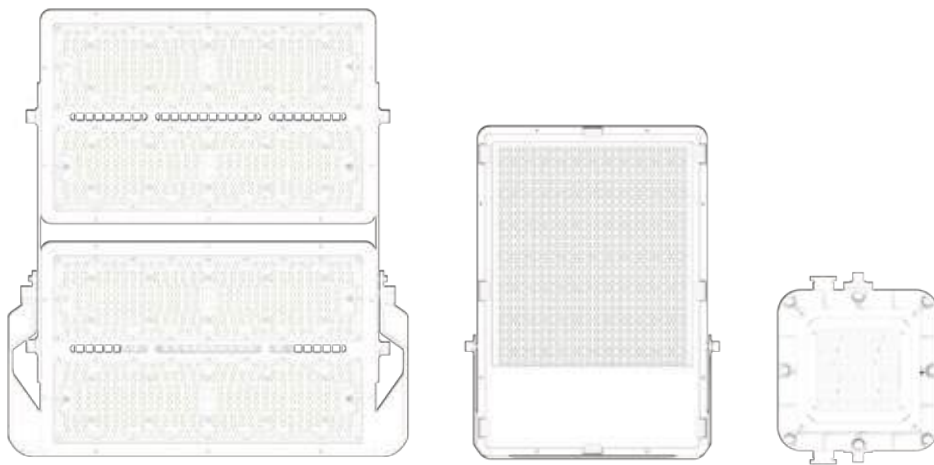


GRANDOX



2026

PRODUCT COLLECTION



COMPANY PROFILE



Shenzhen Grandox Technology Co., Limited

Established in 2008, Shenzhen Grandox Technology Co., Limited is a professional LED lighting manufacturer based in Shenzhen, China, specializing in industrial and outdoor lighting solutions.

Our product range includes high bay, street light, flood light, tri-proof light, sports light, grow light, and explosion-proof lights. Most products are certified with UL, DLC, TUV, ENEC, CE, ROHS, CB, GS, SAA, C-TICK, CCC, and CQC.

We operate a complete supply chain covering die-casting, driver production, and final assembly, ensuring stable quality and reliable delivery. With a team of over 150 employees and 30 engineers, we offer strong OEM and ODM capabilities.

From incoming material inspection to finished product testing, we strictly follow ISO9001 standards. Our in-house laboratory conducts tests including IP waterproof, salt spray, IK grade, and IES distribution to ensure product performance.

We are committed to being a trusted partner for customers worldwide.



Add: Building E, Jinshan Industrial Park, No. 271 Songming Avenue,
Bao'an District, Shenzhen, Guangdong Province, China
Phone: + 86-18098903632
WhatsApp: +86-18207551335
www.grandoxtech.com
info@grandoxtech.com
sales@grandoxtech.com

GRANDOX



LED driver production line



DIP production line



YAMAHA Hi-speed SMT machine



Hi-speed SMT machine



Reflow soldering machine



AOI (Automatic optical inspection)



Tunnel Oven for drying



Automatic thermal gel filling-in line



ATE test



Aging test



LED Highbay



LED Tri-proof Light / Pathway Light



LED Fluorescent Tube / Downlight



LED Flood Light

LED Sports Light



LED Street Light



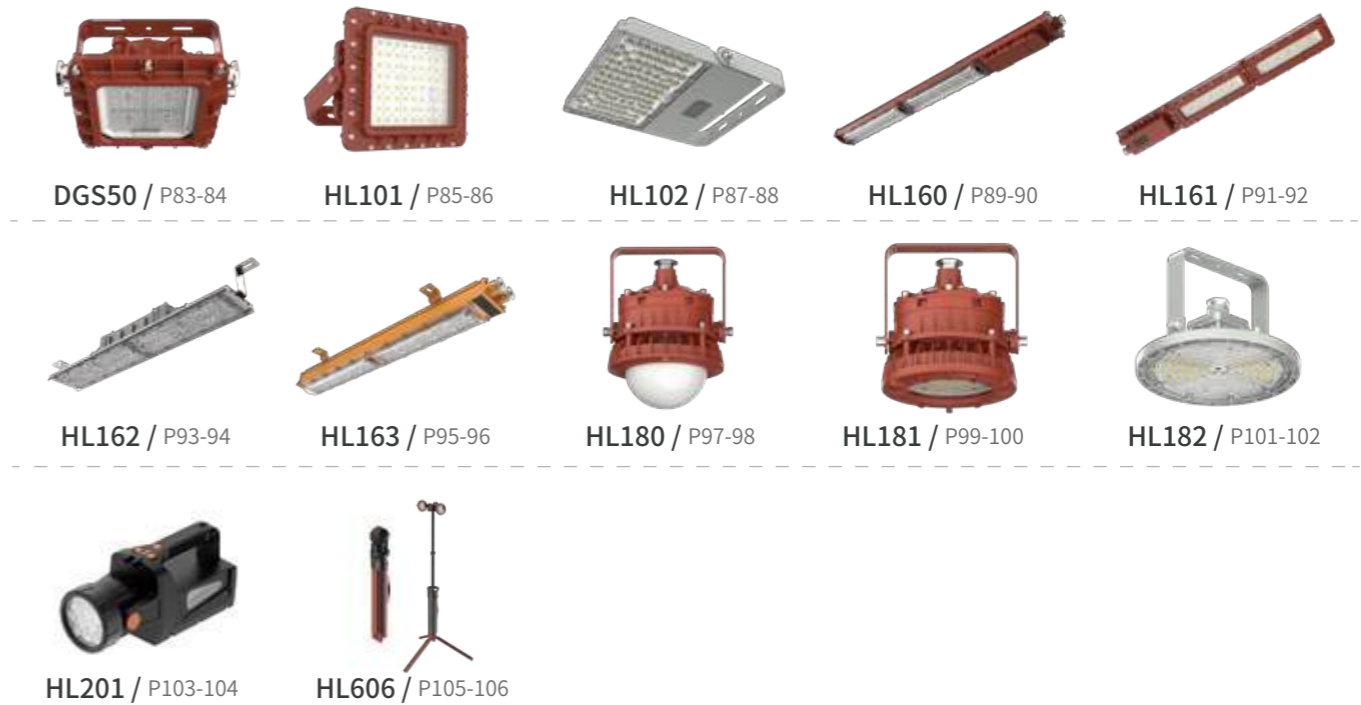
LED Grow Light



LED Tunnel Light



LED Explosion proof Light





2026 LED Highbay Light

Highbay lights are the excellent energy-efficient indoor lighting solutions for large spaces with high ceiling, such as industrial plants, warehouses, workshops, supermarkets, etc.



HB39 Series LED Highbay

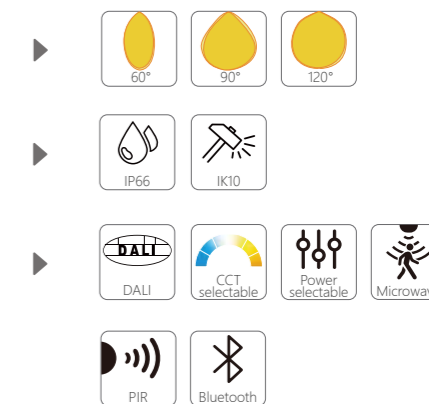
Versatile LED Highbay,
Optimized Performance



HB39 Series LED Highbay

HB39 series highbay achieves the balance of excellent basic performance and price. This series covers a wide range of products and offers multiple choices. With competitive edge on product specifications, it can ensure long-term reliability. It provides a brand-new high performance solution to the majority of industrial lighting applications with IP66 and 6KV/10KV surge protection grade. This series also includes products for cold storage applications as low as -50 °C .

HB39 highbay can be installed with hooks and pipes to meet most applications.



Features:

HB39-C

- 200lm/W (Ra > 70) , 180lm/W | 160lm/W (Ra > 80)
- 60W-240W covering highbay to lowbay lighting
- CCT: 3000K; 4000K; 5000K; 5700K; 6500K

HB39-S

- Plug-play microwave and PIR sensor
- Sensor with bluetooth function optional for intelligent control

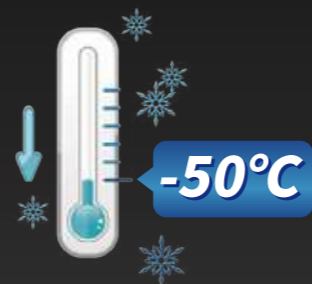
HB39-L

- Optimized optical design provides glare value(UGR) control as low as 16
- Comfortable and healthy lighting effect

HB39-DSK

- Specially designed for wholesalers and distributors with inventory
- Save SKU and stocking cost

Code	Watt	Efficacy (Ra > 80)	Lumen (±10%)	N.W/pc (kgs)	Dimensions(mm)
HB39-C-60W	60W	200lm/W	12000 lm	1.2	φ220*78
HB39-C-100W	100W	200lm/W	20000 lm	1.9	φ265*86
HB39-C-150W	150W	200lm/W	30000 lm	2.1	φ265*86
HB39-C-200W	200W	200lm/W	40000 lm	2.3	φ300*86
HB39-C-240W	240W	200lm/W	48000 lm	2.8	φ330*86

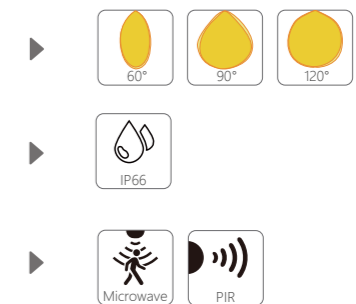


HB39 Cold-storage Highbay

Born for cold storage warehouse lighting
Stable operation at -50°C

HB39 Clod-storage Highbay

Designed specifically for extreme low-temperature environments, it is an efficient lighting solution for cold storage warehouses, freezing factories, and other such places. Utilizing special cold-resistant materials and customized drive technology, it can stably start and continuously operate within a wide temperature range of -50°C to normal temperature, fully meeting the strict requirements of freezing warehouses. With IP66 level dustproof and waterproof design and a fully sealed structure, it effectively isolates high humidity, frosting, and condensation water inside the cold storage, and prevents air leakage, ensuring long-term reliable operation.



Features:

- Lumens per watt: 160; highly energy-efficient
- CCT: 3000K; 4000K; 5000K; 5700K; 6500K
- IP66 protection level + sealed design, resistant to condensation water
- Stable operation at -50°C for a long time
- Lightning protection and surge protection of 6KV/10KV, not affected by high surge voltages generated by large refrigeration compressors
- Optional sensors for intelligent lighting

Code	Watt	Efficacy (Ra > 80)	Lumen (±10%)	N.W/pc (kgs)	Dimensions(mm)
HB39-60W	60W	160lm/W	9600 lm	1.2	φ220*78
HB39-100W	100W	160lm/W	16000 lm	1.9	φ265*86
HB39-150W	150W	160lm/W	24000 lm	2.1	φ265*86
HB39-200W	200W	160lm/W	32000 lm	2.3	φ300*86
HB39-240W	240W	160lm/W	38400 lm	2.8	φ330*86



HB51 LED Highbay

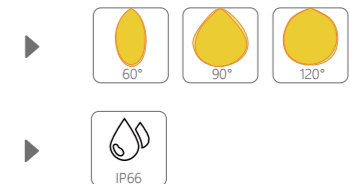
HB51 is an affordable model. It has IP66 protection grade and light efficiency of 120-130lm/W, which is 20%-30% higher than similar products. ADC12 die-casting aluminum heatsink, 30% more heat dissipation area than competitors. PF>0.95, surge protection up to 3KV/6KV, 30,000 hours of life.



E40 screw base optional, easy to install, which is ideal for replacing fluorescent lamps

Features:

- 120-130lm/W
- CCT: 3000K; 4000K; 5000K; 5700K; 6500K
- IP66 protection grade
- Lifetime up to 30,000 hours
- Surge protection up to 3KV/6KV



HB51 LED Highbay

Delicate & modern,
reliable & economical LED solution

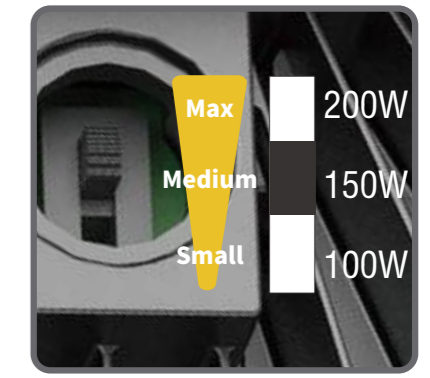
Code	Watt	Efficacy (Ra > 80)	Lumen	N.W/pc (kgs)	Dimensions(mm)
HB51-100W	100W	120lm/W	12000 lm	0.8	φ239*50.5
HB51-150W	150W	120lm/W	18000 lm	1.2	φ279*52
HB51-200W	200W	120lm/W	24000 lm	1.6	φ319*53



HB62 LED Highbay

HB62 LED highbay is designed to meet the comprehensive requirements of customers, including remarkable light efficiency, energy saving and sustainability.

Aesthetic design with beautiful appearance, high quality material and components ensure its reliability and lifetime. It is an ideal solution to most of industrial lighting with competitive price.



Optional: Power adjustable version

Features:

- Light efficiency up to 160lm/W
- CCT: 3000K; 4000K; 5000K; 5700K; 6500K
- IP65 grade with surge protection up to 6KV/10KV
- Lifetime up to 50,000 hours
- Power adjustable version (optional)

- ▶ 60° 90° 120°
- ▶ IP65
- ▶ Power selectable

HB62 LED Highbay

Excellent performance and sustainability,
ultra-high cost performance

Code	Watt	Efficacy (Ra > 80)	Lumen	N.W/pc (kgs)	Dimensions(mm)
HB62-100W	100W	160lm/W	16000 lm	1.2	φ235*83
HB62-150W	150W	160lm/W	24000 lm	1.7	φ275*83
HB62-200W	200W	160lm/W	32000 lm	2.3	φ315*83
HB62-200W (Power adjustable)	200W- 150W- 100W	160lm/W	200W-32000 lm 150W-24000 lm 100W-16000 lm	2.3	φ315*83

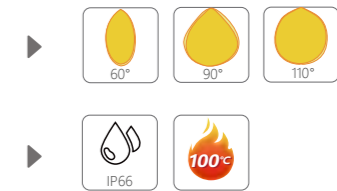


HB100 LED Highbay

Unafraid of a temperature of 100°C

HB100 LED Hi-temp Highbay

HB100 is a new product released this year with honor. It is specially designed for challenging lighting projects with an ambient temperature as high as 100°C, featuring an extremely strong heat dissipation capacity. It is applicable to high-temperature factories such as steel mills, forging workshops, heating workshops, rubber factories, plastic factories, and glass factories.



Features:

- power: 60W / 100W / 150W
- Luminous Efficacy 130lm/W
- CCT: 4000K; 5000K; 5700K; 6500K
- Ceramic 3535 high-quality LED beads, more heat-resistant and with less light attenuation
- Made of special high-temperature resistant materials
- High-temperature resistant tempered glass, anti-yellowing and corrosion-resistant

Code	Watt	Efficacy	Lumen	N.W/pc (kgs)	Dimensions(mm)
HB100-60W	60W	130lm/W	7800 lm	3.2	φ320*230
HB100-100W	100W	130lm/W	13000 lm	4.6	φ360*230
HB100-150W	150W	130lm/W	19500 lm	7	φ400*230

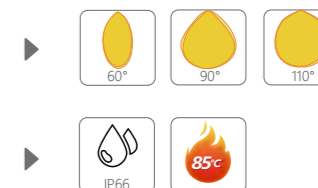


HB85 LED Highbay

Unafraid of a temperature of 85°C

HB85 LED Hi-temp Highbay

HB85 is a new product released this year with honor. It is specially designed for challenging lighting projects with an ambient temperature as high as 85 °C , featuring an extremely strong heat dissipation capacity. It is applicable to high-temperature factories such as steel mills, forging workshops, heating workshops, rubber factories, plastic factories, and glass factories.



Features:

- power: 100W / 150W / 200W
- Luminous Efficacy 130lm/W
- CCT: 4000K; 5000K; 5700K; 6500K
- Ceramic 3535 high-quality LED beads, more heat-resistant and with less light attenuation
- Made of special high-temperature resistant materials
- High-temperature resistant tempered glass, anti-yellowing and corrosion-resistant

Code	Watt	Efficacy	Lumen	N.W/pc (kgs)	Dimensions(mm)
HB85-100W	100W	130lm/W	13000 lm	3.2	φ320*230
HB85-150W	150W	130lm/W	19500 lm	4.6	φ360*230
HB85-200W	200W	130lm/W	26000 lm	7	φ400*230



HB40 LED Highbay

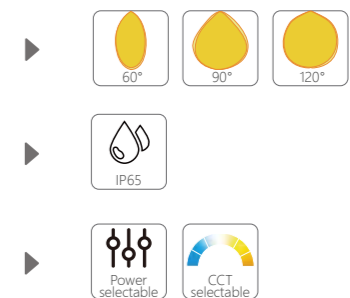
The HB40 is a cost-effective lamp with a light efficiency of up to 185lm/W, up to 37000lm, which helps to maximize energy savings and improve the overall luminous flux in space. Power adjustable and CCT adjustable features provide flexible lighting solutions for a variety of projects while saving storage units and reducing inventory costs.



Power&CCT adjustable

Features:

- Light efficiency up to 185lm/W, more energy-efficient
- CCT: 3000K; 4000K; 5000K; 5700K; 6500K
- Adjustable Power/CCT
- Sensor optional
- optional: 0.5meters safety rope



HB40 LED Highbay

High Light Efficiency, High Cost Performance,
Suitable for Various Scenes

Code	Watt	Efficacy	Lumen	N.W/pc (kgs)	Dimensions(mm)
HB40-200W	200W-150W-100W	150lm/W (Ra > 80)	200W-30000 lm 150W-22500 lm 100W-15000 lm	2.2	φ330*125
HB40-200W	200W-150W-100W	170lm/W (Ra > 80)	200W-34000 lm 150W-25500 lm 100W-17000 lm	2.2	φ330*125
HB40-200W	200W-150W-100W	185lm/W (Ra > 70)	200W-37000 lm 150W-27750 lm 100W-18500 lm	2.2	φ330*125

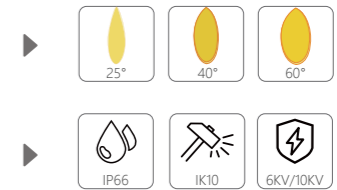


HB500 LED Highbay

The King of High-ceiling Lighting
Super High-Power Highbay lights

HB500 Super power Highbay

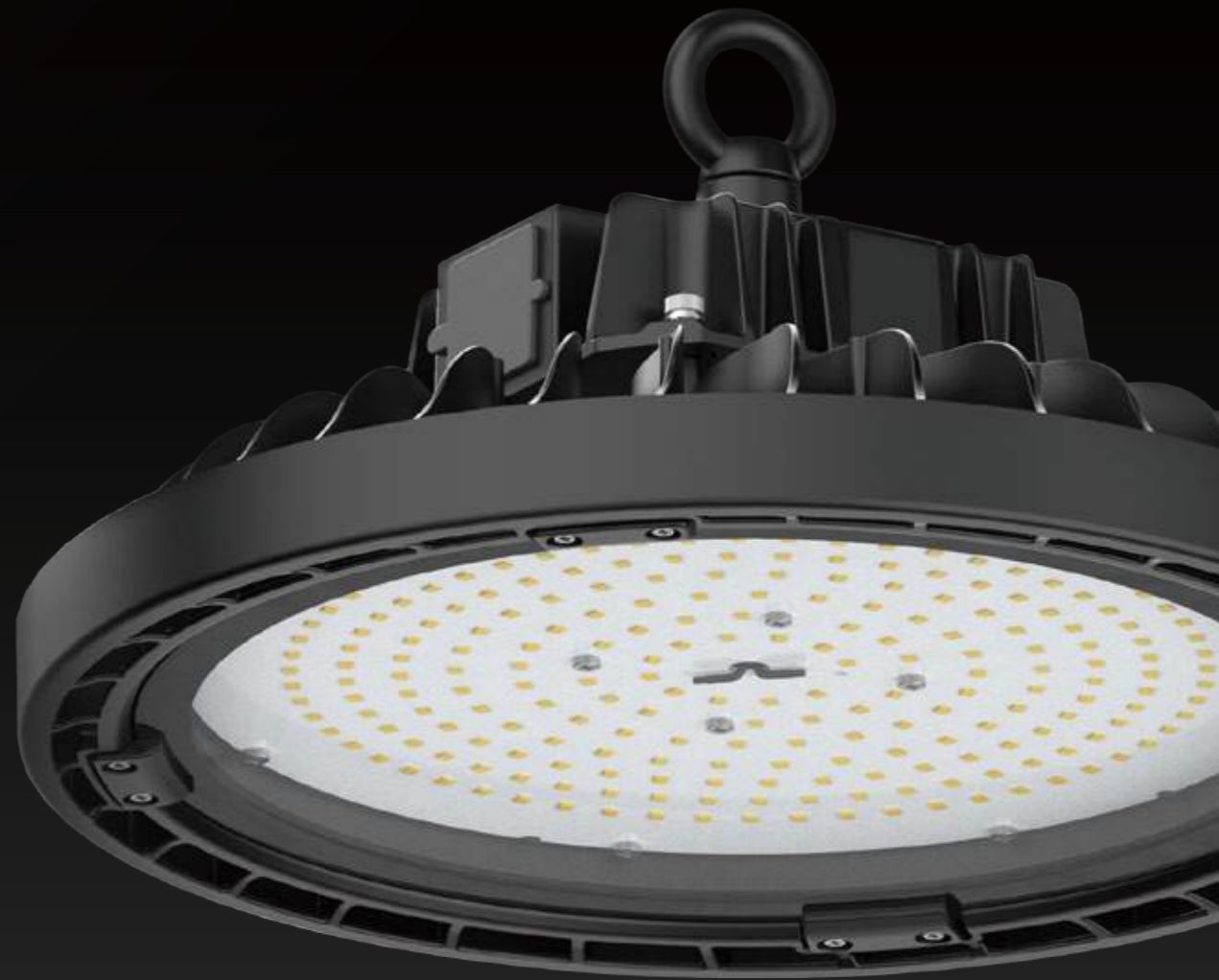
HB500 Highbay for 2025 glory release of new products, with 400W/500W super power and 180lm/W ultra-high light efficiency, designed for 10 meters to 30 meters high mine space to ensure lighting without dead corners. Suitable for steel factories, manufacturing plants, large warehouses, large factory workshops and other large-scale scenarios.



Features:

- Maximum power 500W
- Light efficiency up to 180lm/W
- CCT: 4000K; 5000K; 5700K; 6500K
- Excellent heat dissipation design, excellent heat dissipation effect, low light decay
- Professional optical lens to achieve accurate light distribution control. Effectively avoid light scattering into the air to ensure that the table is fully appropriate lighting brightness
- Higher protection level, easy to handle a variety of complex and harsh industrial lighting environment
- Lifetime up to 50,000 hours, low maintenance costs

Code	Watt	Efficacy	Lumen	N.W/pc (kgs)	Dimensions(mm)
HB500-400W	400W	160lm/W (Ra > 80) 180lm/W (Ra > 70)	64000 lm 72000 lm	8.2	φ400*219.2
HB500-500W	500W	160lm/W (Ra > 80) 180lm/W (Ra > 70)	80000 lm 90000 lm	8.2	φ400*219.2



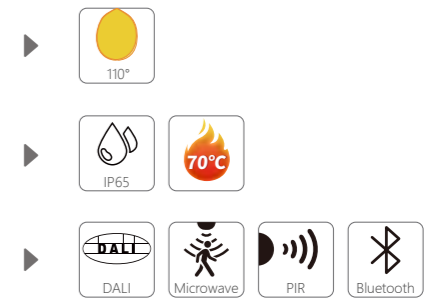
HB65 LED Highbay

HB65 LED highbay is an ideal solution to high-temperature applications. The heatsink of HB65 LED highbay is super big size, with more than 1.5 times the industry average in weight, to build outstanding and perfect heat dissipation performance and ensure the longer lifetime of components.



Features:

- Power up to 300W max.
- CCT: 3000K; 4000K; 5000K; 5700K; 6500K
- Tempered glass cover, easy to clean, corrosion resistant, providing protection in heavily polluted environments.
- Excellent and perfect heat dissipation design ensures stable and excellent performance even under high temperature conditions up to 70 ° C.



HB65 LED Highbay

Comprehensive design above standard,
strong, outstanding

HB65 Hi-temp:

Code	Watt	Efficacy (Ra > 80)	Lumen	N.W/pc (kgs)	Dimensions(mm)
HB65-H-80W	80W	160lm/W	12800 lm	2.7	φ280*165
HB65-H-130W	130W	160lm/W	20800 lm	3.5	φ320*178
HB65-H-190W	190W	160lm/W	30400 lm	4.8	φ360*178

HB65 Standard:

Code	Watt	Efficacy (Ra > 80)	Lumen	N.W/pc (kgs)	Dimensions(mm)
HB65-100W	100W	160lm/W	16000 lm	2.4	φ280*165
HB65-150W	150W	160lm/W	24000 lm	2.4	φ280*165
HB65-200W	200W	160lm/W	32000 lm	3.3	φ320*178
HB65-240W	240W	160lm/W	38400 lm	4.3	φ360*178
HB65-300W	300W	160lm/W	48000 lm	5.5	φ360*178

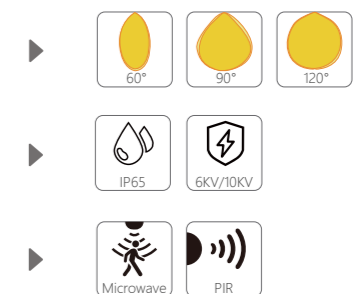


HB67 LED Eye-protective Highbay Light

Eye-protective design for enhanced comfort and eye health

HB67 LED Eye-protective Highbay Light

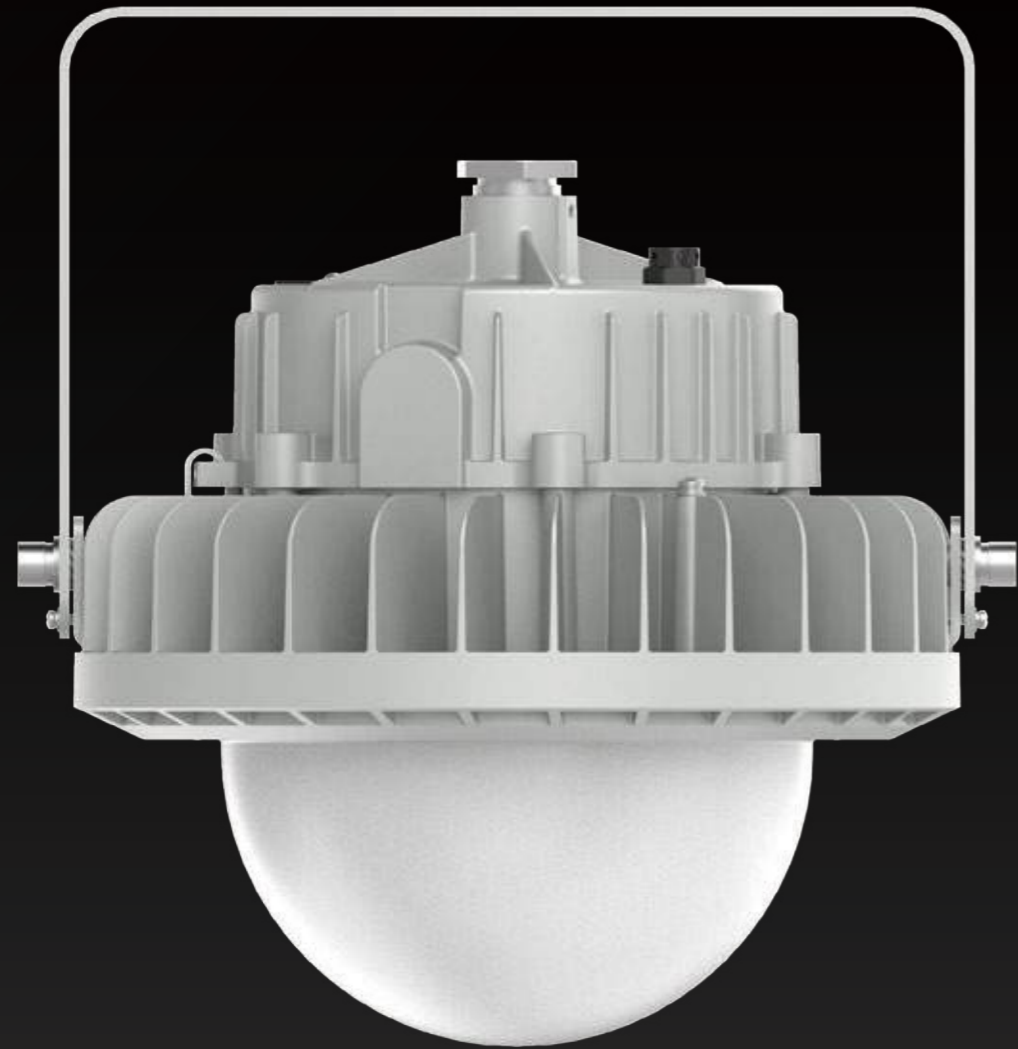
This LED eye-protective high baylight is specially designed for high-ceiling spaces such as industrial factories, warehouses and gymnasiums, integrating high energy efficiency and excellent visual comfort. It adopts professional optical distribution design, achieving an ultra-high luminous efficacy of up to 150lm/W, with a power range of 40W to 120W, which easily meets the energy-saving requirements of large-area lighting. The light source is of superior quality with a color rendering index $Ra > 80$, restoring the true colors of objects; meanwhile, the glare value is strictly controlled below 22, effectively reducing visual fatigue and creating a comfortable working environment.



Features:

- Power: 40W-120W
- CCT: 3000K; 4000K; 5000K; 5700K; 6500K
- Luminous efficacy of 150lm/W, 70% more energy-efficient than traditional light
- UGR < 22, anti-glare and eye-protective; $Ra > 80$ high color rendering, clear vision without fatigue.
- 6KV/10KV surge protection, IP65 waterproof rating, hassle-free and maintenance-free.
- Optional ZHAGA intelligent sensor, auto-on when occupied/ auto-off when unoccupied for greater energy saving.

Code	Watt	Efficacy ($Ra > 80$)	Lumen	N.W/pc (kgs)	Dimensions(mm)
HB67-40W	40W	150lm/W	6000 lm	1.7	φ320*182
HB67-60W	60W	150lm/W	9000 lm	1.7	φ320*182
HB67-80W	80W	150lm/W	12000 lm	1.7	φ320*182
HB67-100W	100W	150lm/W	15000 lm	1.7	φ320*182
HB67-120W	120W	150lm/W	18000 lm	1.7	φ320*182



P10 LED Platform light

Sturdy, durable, long-lasting, reliable

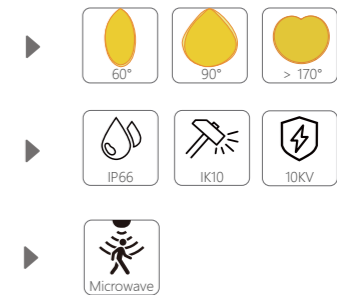
P10 LED Platform Light

This LED platform light achieves outstanding energy-saving performance with a high luminous efficiency of 190lm/W. It offers power options ranging from 20W to 150W and features IP66 waterproof and dustproof rating as well as WF2 corrosion resistance rating. It can operate stably for a long time in complex industrial environments such as high humidity, high salt spray, and chemical corrosion. It is the preferred lighting solution for various areas in chemical, steel mills, power, and heavy industry scenarios, including factory areas, workshops, stations, platforms, alleys, large facilities, equipment, and devices.



Features:

- Power: 20W - 150W
- CCT: 2700K; 4000K; 5000K; 5700K; 6500K
- 190lm/W luminous efficacy
- Glare value < 23, anti-glare and eye-friendly, clear vision without fatigue.
- IP66 + IK10 + 10KV ultra-high protection, safe and stable operation even in extreme weather or voltage fluctuations.
- WF2 anti-corrosion grade, stable performance, long lifespan.
- Supports microwave sensing module, achieving further energy saving.
- Can provide emergency power supply, ≥ 90 minutes



Code	Watt	Efficacy	Lumen	N.W/pc (kgs)	Dimensions(mm)
P10-100W (PC Lens)	20W-100W	150lm/W 190lm/W	15000 lm 19000 lm	3.1	223*190*206
P10-150W (PC Lens)	100W-150W	150lm/W 190lm/W	22500 lm 28500 lm	3.7	282*250*206
P10-100W (PC Fog blanket)	20W-100W	130lm/W 170lm/W	13000 lm 17000 lm	3.12	223*190*274
P10-150W (PC Fog blanket)	100W-150W	130lm/W 170lm/W	19500 lm 25500 lm	3.84	282*250*293

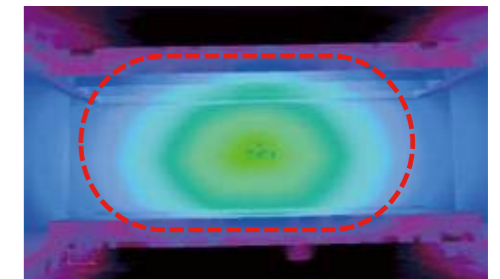


HBL117 LED Linear Highbay

Designed for high shelf
warehouse lighting applications

HBL117 LED Linear Highbay

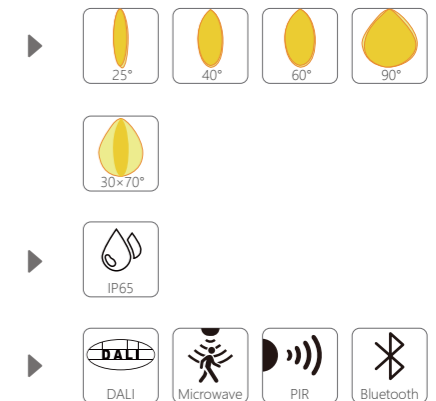
The HBL117 is designed for high-shelf warehouse created LED strip mining lamp, its unique 30X70° luminous Angle can more efficiently control the light in the warehouse corridor, improve the utilization of light. And has excellent light efficiency, superior heat dissipation performance, low glare value UGR < 16



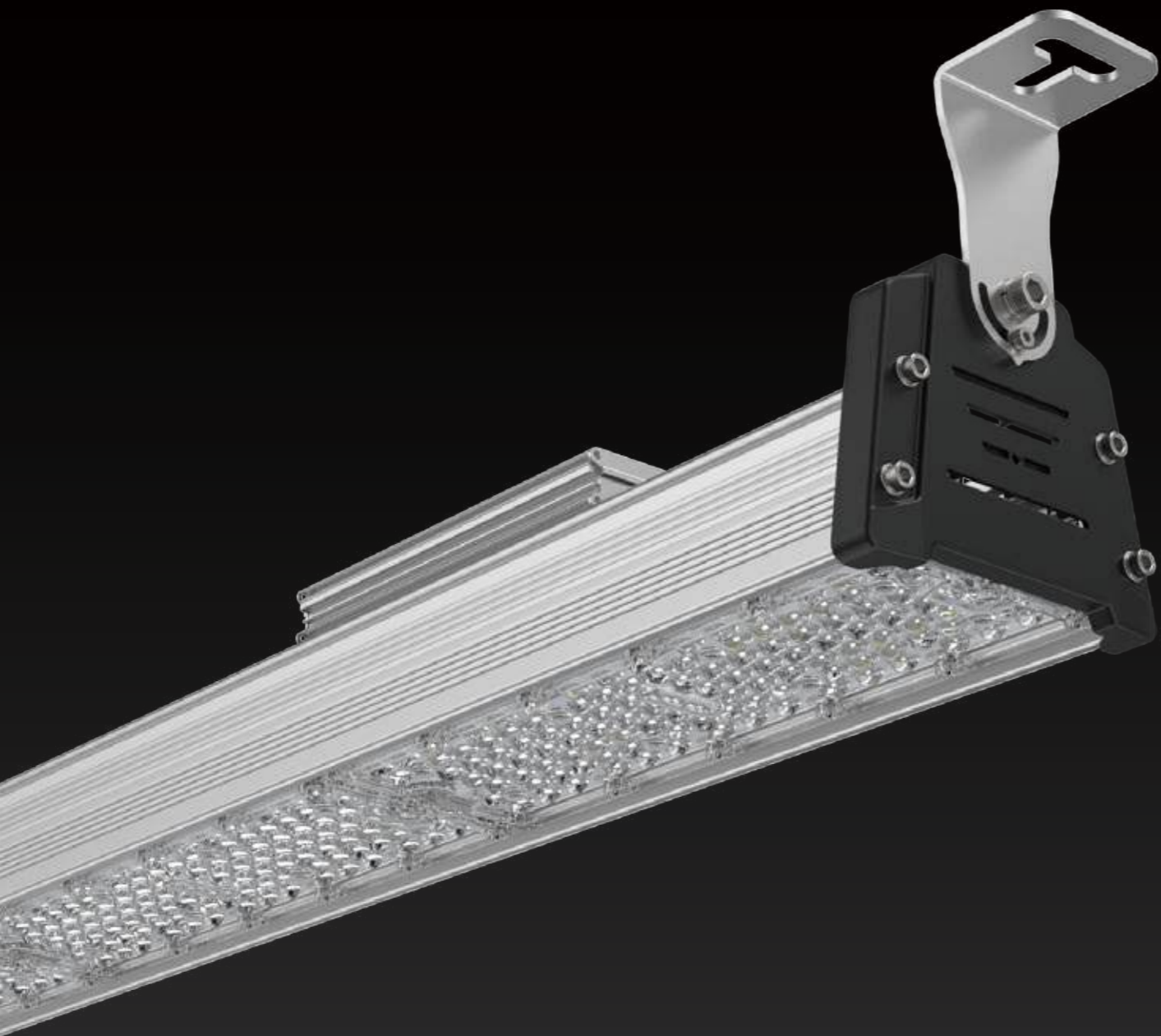
30X70°

Features:

- Up to 175lm/W
- CCT: 3000K; 4000K; 5000K; 5700K; 6500K
- Pure aluminum housing, excellent heat dissipation and low light decrease
- 30° X70° beam angle provides precise and efficient lighting for high shelves
- UGR<16, more comfortable visual effects



Code	Watt	Efficacy (Ra > 80)	Lumen (±10%)	N.W/pc (kgs)	Dimensions(mm)
HBL117-100W	100W	175lm/W	17500 lm	2.3	440*179*91
HBL117-150W	150W	170lm/W	25500 lm	2.4	440*178*91
HBL117-200W	200W	165lm/W	33000 lm	2.6	500*178*91
HBL117-300W	300W	170lm/W	51000 lm	4.5	880*178*91

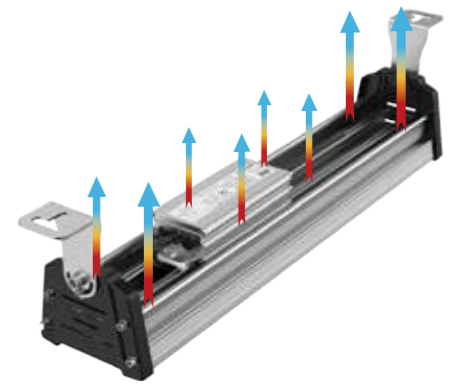


WH313 LED Linear Highbay

Optimized Performance
Multifunctional LED Linear Highbay

WH313 LED Linear Highbay

The WH313 LED Linear Highbay is designed for high shelf warehouses. The professional optical Angle design perfectly meets the lighting requirements of the high-shelf warehouse area. Optional PIR/ microwave motion sensor, high efficiency and energy saving



Compact Design and Good Reliability
30% Improvement in Heat Dissipation

Features:

- Light efficiency up to 160lm/W
- CCT: 3000K; 4000K; 5000K; 5700K; 6500K
- Super cost-effective design
- Wide range of beam angles can adapt to any environment
- IP65&IK10 Protection Grade
- Ra > 80
- optional: ±45° wall mounting accessories (standard screws)

►

►

►

Code	Watt	Efficacy (Ra > 80)	Lumen (±10%)	N.W/pc (kgs)	Dimensions(mm)
WH313-80W01	80W	160lm/W	12800 lm	2.3	313*130*108
WH313-100W01	100W	145lm/W	14500 lm	2.4	313*130*108
WH313-150W02	150W	160lm/W	24000 lm	3.8	603*130*108
WH313-200W02	200W	145lm/W	29000 lm	3.9	603*130*108
WH313-240W03	240W	160lm/W	38400 lm	5.2	893*130*108
WH313-300W03	300W	145lm/W	43500 lm	5.3	893*130*108



HBL120 LED Linear Highbay Light

Sleek linear design, concise and stylish

HBL120 LED Linear Highbay Light

HBL120 is specially designed for commercial and industrial applications with high requirements for lamp appearance. It features excellent heat dissipation performance, ensuring long lifespan and low light decay of the LED chips. It boasts outstanding luminous efficacy, soft lighting and strong applicability. This product is an ideal replacement for various traditional industrial lamps. It is suitable for multiple applications, including factories, production lines, shopping malls, supermarkets, offices, libraries, gyms, and stadiums, etc.



Internal power supply
(60W/80W/100W/120W)



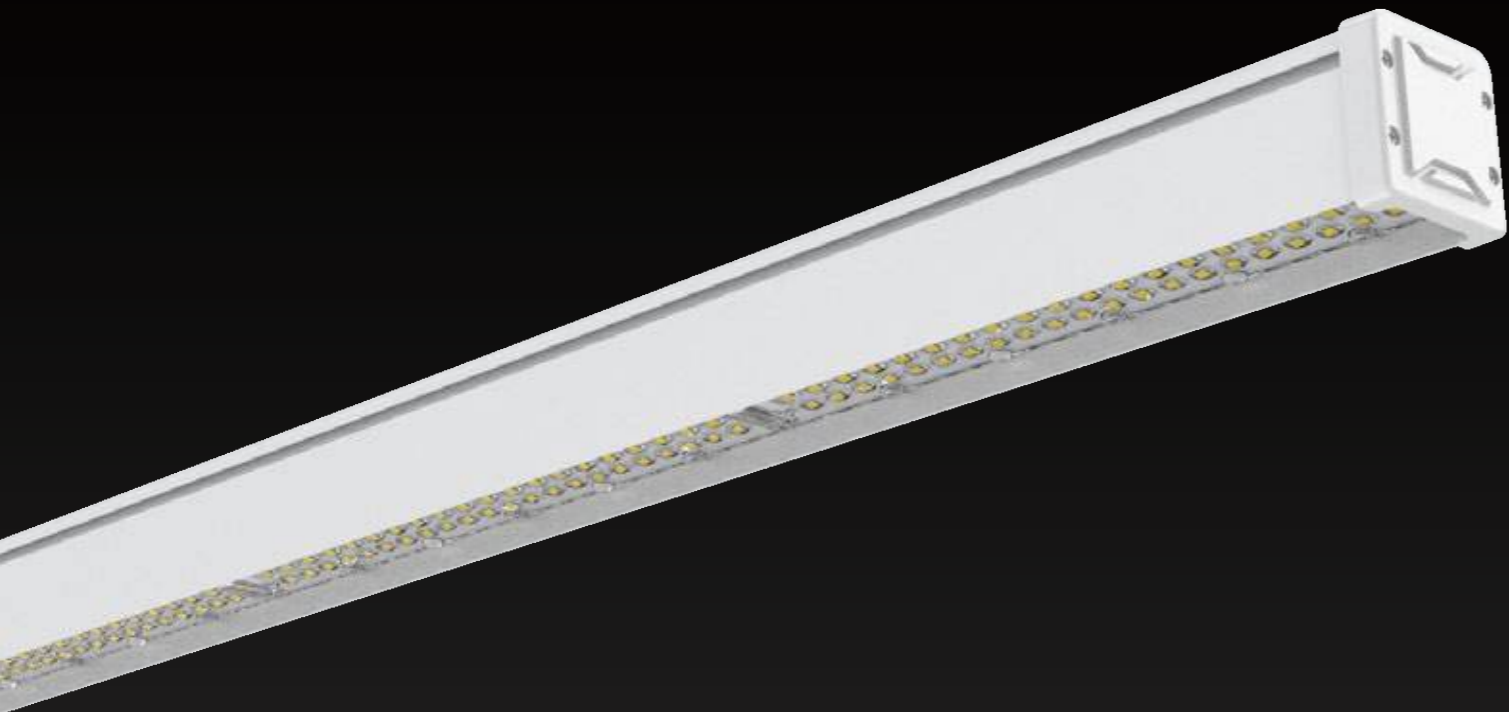
External power supply
(60W/80W/100W/120W/150W)

Features:

- High-quality LED chips with luminous efficacy up to 160lm/W
- CCT: 3000K 4000K; 5000K; 5700K; 6500K
- High color rendering index, reproduces true colors
- Aluminum lamp body, excellent heat dissipation, low light decay and long service life of light
- External power supply and internal power supply are available for selection
- Minimalist design, versatile for all spaces, PC frosted cover for soft lighting



Code	Watt	Efficacy (Ra > 80)	Lumen	N.W/pc (kgs)	Dimensions(mm)
HBL120-60W	60W	130lm/W 160lm/W	7800 lm 9600 lm	2.9	1200*202*52
HBL120-80W	80W	130lm/W 160lm/W	10400 lm 12800 lm	2.9	1200*202*52
HBL120-100W	100W	130lm/W 160lm/W	13000 lm 16000 lm	3.0	1200*202*52
HBL120-120W	120W	130lm/W 160lm/W	15600 lm 19200 lm	3.0	1200*202*52
HBL120-150W	150W	130lm/W 160lm/W	19500 lm 24000 lm	3.0	1200*202*52

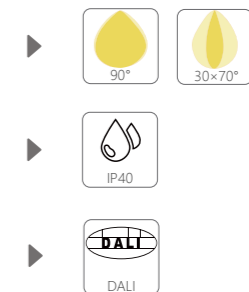


T208 LED Linear Fixture

The beauty of simplicity, extraordinary lighting effects

T208 LED Linear Fixture

T208 is a highly efficient and durable multi-purpose room lamp, specially designed for the entrance and reception area. The lamp body adopts a sturdy and durable aluminum alloy shell, with excellent heat dissipation effect. The use of high-efficiency lamp beads helps to save energy and electricity. It adopts a frequency-free lightning source, providing soft and comfortable light. Its low glare design offers a perfect lighting solution for areas such as reception zones and offices that require a low UGR level.



Features:

- Outstanding luminous efficacy, with a luminous efficacy as high as 180lm/W
- CCT: 3000K 4000K; 5000K; 5700K; 6500K
- There is no frequent lightning source, and the light is soft, reducing eye fatigue
- Ultra-low glare design, UGR<13

Code	Watt	Efficacy (Ra > 80)	Lumen	N.W/pc (kgs)	Dimensions(mm)
T208-40W12	40W	180lm/W	7200 lm	1.8	1200*61.1*62.1
T208-60W12	60W	180lm/W	10800 lm	1.8	1200*61.1*62.1
T208-80W12	80W	180lm/W	14400 lm	1.8	1200*61.1*62.1
T208-100W12	100W	180lm/W	18000 lm	1.8	1200*61.1*62.1
T208-120W12	120W	180lm/W	21600 lm	1.8	1200*61.1*62.1
T208-60W15	60W	180lm/W	10800 lm	2	1500*61.1*62.1
T208-80W15	80W	180lm/W	14400 lm	2	1500*61.1*62.1
T208-100W15	100W	180lm/W	18000 lm	2	1500*61.1*62.1
T208-120W15	120W	180lm/W	21600 lm	2	1500*61.1*62.1
T208-150W15	150W	180lm/W	27000 lm	2	1500*61.1*62.1



2026 LED Tri-proof Light / Pathway Light

The Tri-proof Light is a versatile lighting package with many different applications. The large selection of optics means it is a sure winner in special applications such as padel and tennis courts, and in warehouses or supermarkets with high requirements for light performance.

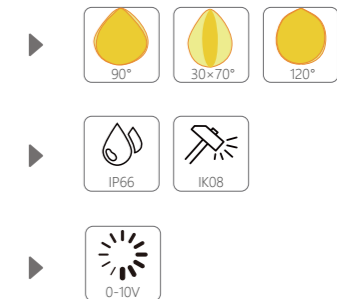
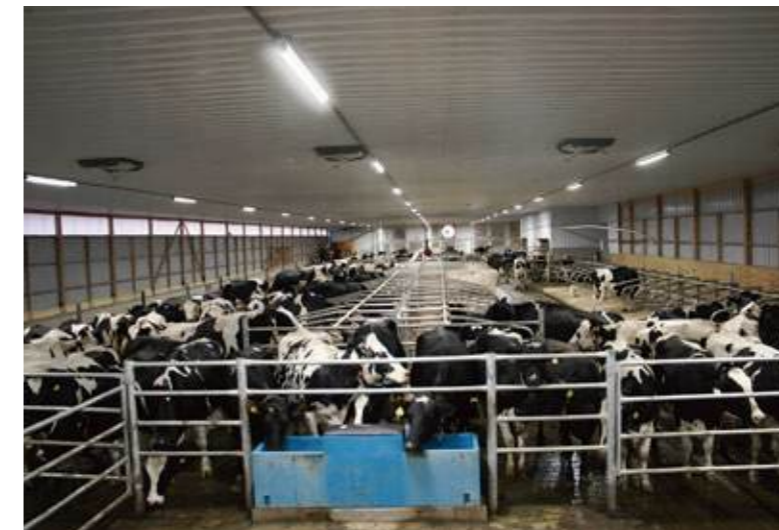


5708 LED Tri-proof Light

Half Aluminum and Half Plastic, Strong and Reliable, Low glare
The First Choice for Subway Lighting

5708 LED Tri-proof Light

The 5708 Tri-proof light adopts advanced anti-glare design, with the glare value (UGR) less than 13. This effectively reduces the glare of light and visual fatigue. It is suitable for places with strict requirements for lighting comfort, such as precision workshops, offices, and hospitals. At the same time, the lamp has IP66 level dustproof and waterproof performance, which can completely prevent dust from entering and can withstand strong water spraying, unafraid of dampness, dustiness or corrosive environments; and IK08 level impact resistance protection, which can withstand a 5-joule impact (approximately a 1.7-meter drop of a 1-kilogram object), sturdy and durable, meeting the strict requirements of industrial and outdoor scenarios.



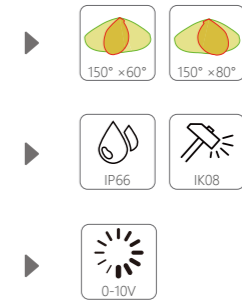
Features:

- Luminous Efficiency 200lm/W
- 20W / 40W / 60W / 120W
- CCT: 3000K - 6500K
- Low glare value. Provides a more comfortable lighting environment
- Multiple lens angles available, meeting the needs of various scenarios
- No flashing power supply, soft light, reduces eye fatigue
- Can be used in series

Code	Watt	Efficacy	Lumen	N.W/pc (kgs)	Dimensions(mm)
5708-40W	40W	150lm/W (Ra > 80)	6000 lm	1.6	677*80*87
		170lm/W (Ra > 80)	6800 lm		
		190lm/W (Ra > 70)	7600 lm		
5708-60W	60W	150lm/W (Ra > 80)	9000 lm	1.6/2.2/3	677/974/1270 *80*87
		170lm/W (Ra > 80)	10200 lm		
		190lm/W (Ra > 70)	11400 lm		
5708-90W	90W	150lm/W (Ra > 80)	13500 lm	2.2/3	974/1270 *80*87
		170lm/W (Ra > 80)	15300 lm		
		190lm/W (Ra > 70)	17100 lm		
5708-120W	120W	150lm/W (Ra > 80)	18000 lm	3	1270 *80*87
		170lm/W (Ra > 80)	20400 lm		
		190lm/W (Ra > 70)	22800 lm		

5708 LED Pathway Light

The luminous efficiency can reach 120lm/W, covering a power range of 5W to 30W, which can meet the lighting requirements for various scenarios such as corridors, passages, stairwells, and factory walkways. It supports color temperature selection from 3000K to 6500K, allowing for flexible configuration according to the environmental atmosphere to enhance visual comfort. The lamp body has an IP66 waterproof and dustproof rating, and is paired with corrosion-resistant materials and surface protection processes, enabling long-term stable operation in humid, high-dust, and chemical environments.



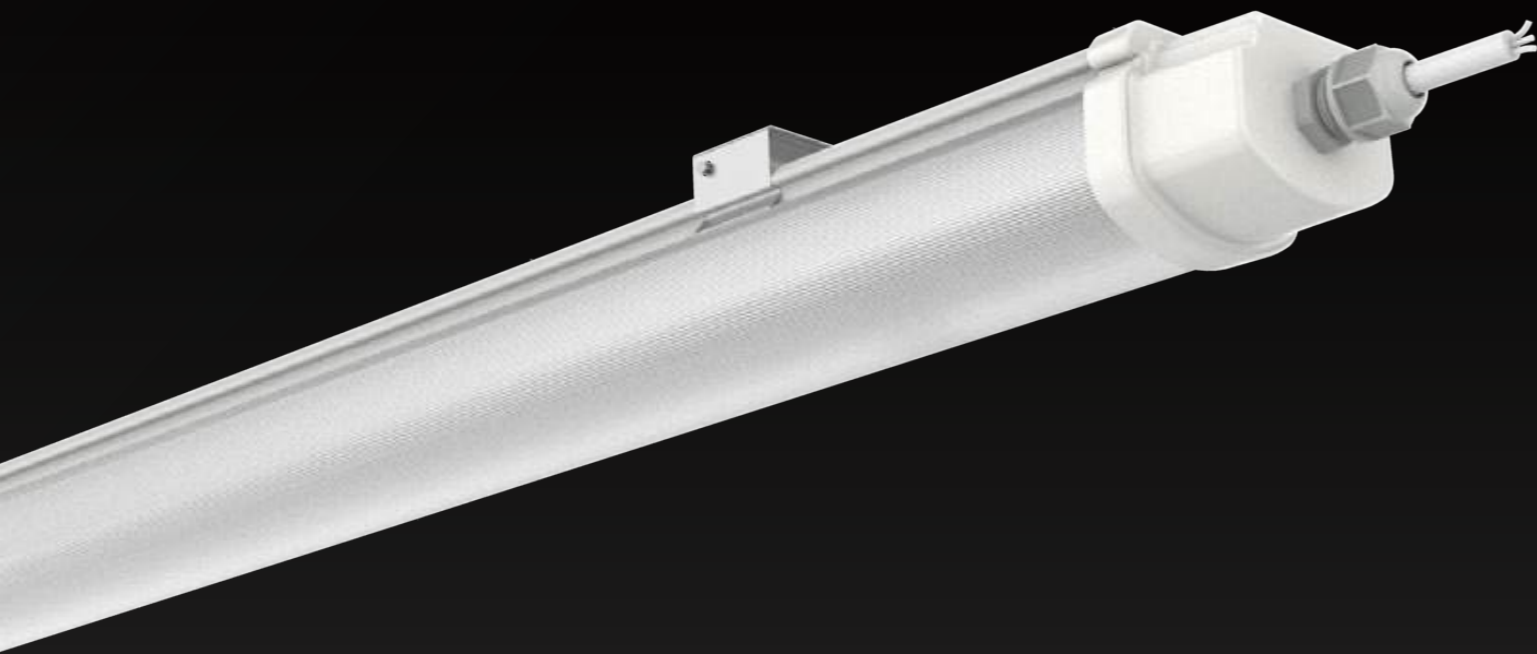
Features:

- The luminous efficacy is as high as 170lm/W
- 5W / 12W / 15W / 30W
- CCT: 3000K - 6500K
- Low glare value. Provides a more comfortable lighting environment
- Soft light, reduces eye fatigue
- Can be used in series
- Can provide emergency power supply, lasting for 3 hours

Code	Watt	Efficacy	Lumen	N.W/pc (kgs)	Dimensions(mm)
5708-5W	5W	120lm/W	600 lm	0.8	277*80*87
		170lm/W	850 lm		
5708-12W	12W	120lm/W	1440 lm	0.8	277*80*87
		170lm/W	2040 lm		
5708-15W	15W	120lm/W	1800 lm	0.95	367*80*87
		170lm/W	2550 lm		
5708-30W	30W	120lm/W	3600 lm	0.95	367*80*87
		170lm/W	5100 lm		

5708 LED Pathway Light

Sturdy, durable, beautiful and comfortable



T503 LED Tri-proof Light

Slim, stylish, reliable and affordable

T503 LED Tri-proof Light

The T503 tri-proof light is a cost-effective light. The light body is designed to be durable, waterproof and dustproof. Its rough and low-key design can provide a durable, energy-saving and environmentally friendly solution. Its non-flicker power supply makes the light uniform and glare-free, which is beneficial to workers' operations.



Features:

- Stylish and slim design, saving shipping cost
- Luminous Efficiency 150lm/W
- Power Factor > 0.95
- CCT: 3000K; 4000K; 5000K; 5700K; 6500K
- Lifetime up to 50,000 hours
- Wall mouting or hanging installation
- Flicker-free driver makes soft light and reduces eye fatigue

Code	Watt	Efficacy (Ra > 80)	Lumen	N.W/pc (kgs)	Dimensions(mm)
T503-20W12	20W	150lm/W	3000 lm	0.9	1198*68*54
T503-40W12	40W	150lm/W	6000 lm	0.9	1198*68*54
T503-40W15	40W	150lm/W	6000 lm	1.2	1498*68*54

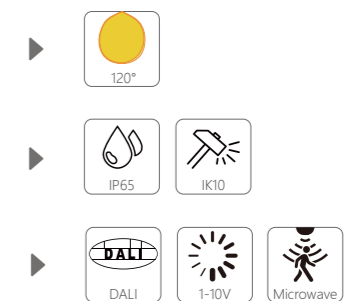


T512 LED Tri-proof Light

Slim and stylish
Can be used in series

T512 LED Tri-proof Light

T512 Tri-Proof Light is highly durable and robust designed for production areas, parking facilities and other harsh locations. Its polycarbonate housing is cast from a single mold and therefore absolutely dust and waterproof. Its ingress protection rating of IP65 & IK10 assures that it can truly be used indoor and outdoor under all conditions. The flicker-free driver design make the light uniform and without glare, improved end-caps featuring design allow for tool-free wiring and assure a very fast and almost effortless installation.



Features:

- High energy efficiency up to 150lm/W
- CCT: 3000K; 4000K; 5000K; 5700K; 6500K
- Equipped with knob-type end cap, no tool required for wiring, easier and faster installation
- Flicker-free driver makes soft light and reduces eye fatigue
- The application of microwave motion sensors makes lighting more intelligent and environmentally friendly

Code	Watt	Efficacy (Ra > 80)	Lumen	N.W/pc (kgs)	Dimensions(mm)
T512-20W06	20W	150lm/W	3000 lm	0.78	773*68*69
T512-40W12	40W	150lm/W	6000 lm	1.05	1373*68*69
T512-60W12	60W	150lm/W	9000 lm	1.25	1373*68*69
T512-50W15	50W	150lm/W	7500 lm	1.25	1673*68*69
T512-60W15	60W	150lm/W	9000 lm	1.5	1673*68*69

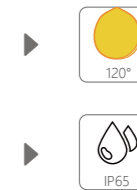


T552 LED Tri-proof Light

Slim and stylish

T552 LED Tri-proof Light

The T552 LED Tri-Proof Light is a highly durable and robust fixture designed for production areas, parking facilities, and other demanding environments. With an IP65 rating, it offers excellent resistance to dust, water, and impact, making it suitable for various indoor and outdoor applications. The flicker-free power supply ensures uniform, glare-free illumination that enhances visual comfort for workers. The improved end cap design allows for tool-free wiring, simplifying and speeding up installation.



Features:

- Lumen efficiency: 140 lm/W
- 36W/50W
- CCT: 3000K; 4000K; 5000K; 5700K; 6500K
- IP65 waterproof rating, resistant to humid environments
- Optional CRI > 90, more realistic colors
- Flicker-free driver makes soft light and reduces eye fatigue.

Code	Watt	Efficacy (Ra > 80)	Lumen	N.W/pc (kgs)	Dimensions(mm)
T552-36W12	36W	140lm/W	5000 lm	1.3	1218*54*64
T552-50W12	50W	140lm/W	7000 lm	1.3	1218*54*64
T552-50W15	50W	140lm/W	7000 lm	1.7	1518*54*64



2026 LED Tube Light / Downlight



Tube Lights are typically used in industrial and residential spaces requiring large-area, uniform and continuous lighting. Examples include factory production lines, warehouse aisles, open-plan office ceilings, supermarket shelf areas, as well as basements and waiting halls that demand extensive light coverage.

Downlights are typically applied in industrial and residential spaces requiring local spotlighting and accent lighting. Examples include workshop equipment operation, workshop maintenance, commercial exhibition hall areas, living room accent walls, as well as ceiling areas with high requirements for fixture concealment and space neatness.

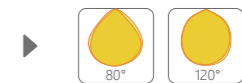


T81 LED Tube Light

Sturdy, Reliable, Durable

T81 LED Tube Light

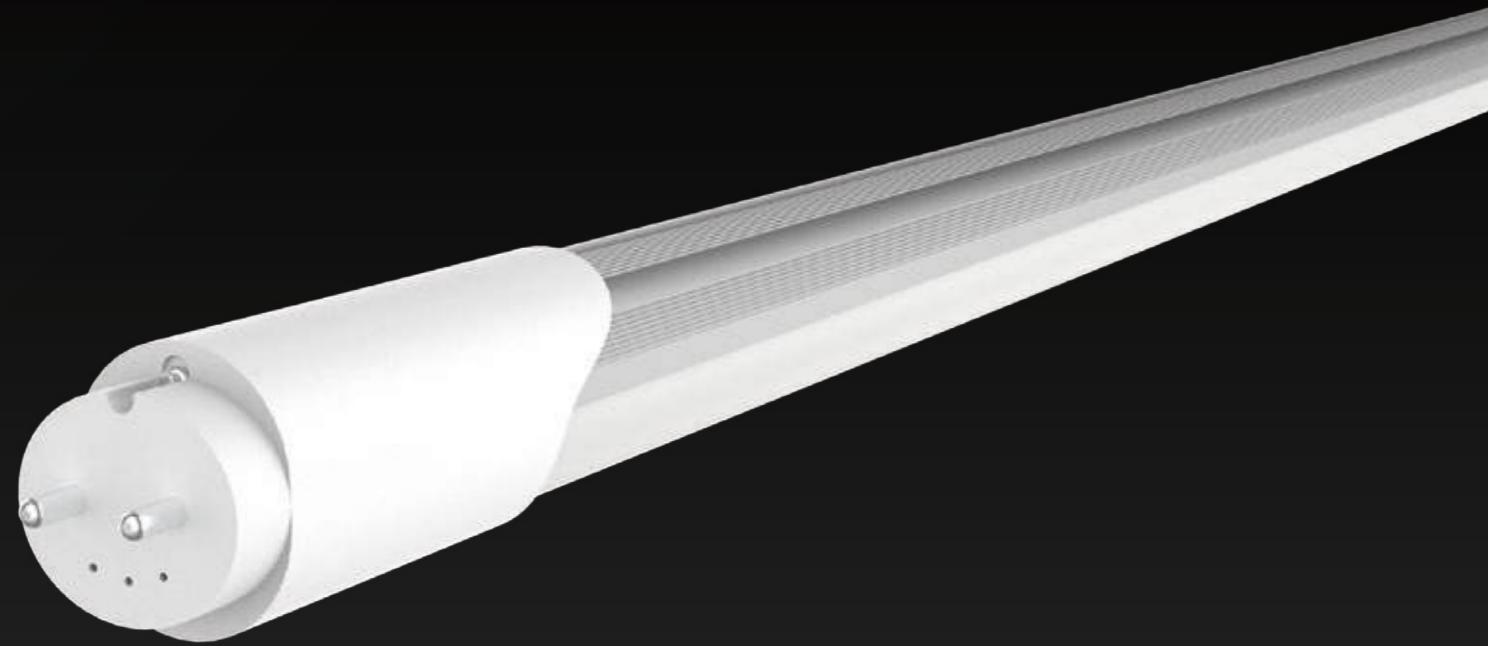
This LED Tube adopts an all-plastic structural design, ensuring both lightweight and durability. It boasts a high luminous efficacy of 200lm/W, offering 6W and 12W power options to meet the needs of different lighting scenarios. Its color temperature range covers 2700K warm yellow light to 6500K cool white light, adapting to various application requirements. Compliant with flicker-free technology standards and certified by the IES61549 shatter-resistant and crack-resistant test, it effectively enhances usage safety. The mounting interface features a convenient snap-fit design, allowing quick replacement and fixation without auxiliary tools. It is the ideal choice for intelligent upgrades of commercial, residential and industrial lighting.



Features:

- High luminous efficacy up to 200lm/W
- 6W / 12W
- CCT: 2700K-6500K
- All-plastic structural design, ensuring lightweight and durability
- Certified by IES61549 international shatter-resistant test, effectively preventing accidental breakage risks
- Flicker-free power supply, delivering soft light to reduce eye fatigue
- Convenient Installation

Code	Watt	Efficacy	Lumen	N.W/pc (kgs)	Dimensions(mm)
T81-6W	6W	200lm/W	1200 lm	0.14	1210*28*28
T81-12W	12W	200lm/W	2400 lm	0.14	1210*28*28



T82 LED Tube Light

Slim, stylish, reliable

T82 LED Tube Light

This LED light tube adopts an innovative semi-aluminum and semi-plastic structure design, ensuring excellent heat dissipation performance while also achieving lightweight and durability. Its luminous efficiency is up to 200lm/W, offering two power options of 6W and 12W to meet the needs of different lighting scenarios; the color temperature range covers from 2700K warm yellow light to 6500K pure white light, allowing for flexible adjustment according to the environmental atmosphere. The lamp tube strictly follows the non-flashing frequency technical standard and has passed the IES 61549 international shatterproof test certification, effectively enhancing safety during use.



Features:

- High luminous efficacy up to 200lm/W
- 6W / 12W
- CCT: 2700K-6500K
- Flicker-free power supply, delivering soft light to reduce eye fatigue
- Convenient Installation
- The structure is designed with a combination of aluminum and plastic, achieving a balance between rigidity and flexibility
- Passed the IES 61549 international anti-shattering test, effectively preventing the risk of accidental breakage
- Easy to install.

Code	Watt	Efficacy	Lumen	N.W/pc (kgs)	Dimensions(mm)
T82-6W	6W	200lm/W	1200 lm	0.22	1215*28*33
T82-12W	12W	200lm/W	2400 lm	0.22	1215*28*33



D6 LED Downlight

Slim and Stylish, Reliable and Cost-Effective

D6 LED Downlight

This LED Downlight adopts a high-efficiency light source, with an overall luminous efficacy of up to 200lm/W, delivering high-brightness illumination while achieving low energy consumption. It supports color temperature options ranging from 3000K to 6500K; its optical design adapts to different spatial atmospheres and visual needs. Offering two power options (6W/10W), it is suitable for multi-scenario lighting such as corridors, passageways, and office areas. The downlight features a low-glare optical design, with soft and comfortable light that effectively reduces visual fatigue. Equipped with an IP42 protection rating, it is suitable for use in most indoor environments. It remains stable and reliable even under humidity fluctuations or long-term operation, ensuring the long-term quality and stability of engineering projects.



Features:

- High luminous efficacy up to 200lm/W
- CCT: 3000K- 6500K
- Slim and stylish design, reducing shipping costs
- Sleek appearance, lightweight and durable
- IP42 protection rating for enhanced safety and weather resistance
- Flicker-free power supply that delivers soft light, reducing eye fatigue

Code	Watt	Efficacy	Lumen	N.W/pc (kgs)	Dimensions(mm)
D6-6W	6W	170lm/W	1020 lm	0.3	φ200*50
		200lm/W	1200 lm		
D6-10W	10W	170lm/W	1700 lm	0.3	φ200*50
		200lm/W	2000 lm		



D15 LED Surface-Mounted Downlight

Stylish and Durable



Stent installation



Cover plate installation



Stent installation



Cover plate installation

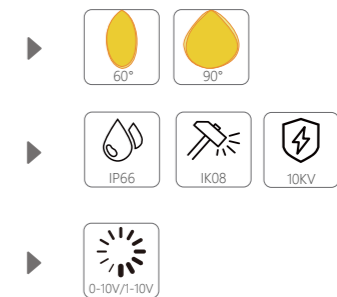
D15 LED Surface-Mounted Downlight

This LED Downlight delivers outstanding energy-saving performance with a high luminous efficacy of 180lm/W. It offers multiple power options ranging from 30W to 150W, catering to various lighting needs in scenarios including high-speed rail stations, airports, exhibition halls, shopping malls, stadiums, large conference rooms, banquet halls, and public areas. Equipped with a low-glare optical design (UGR < 15), it effectively reduces visual fatigue and enhances lighting comfort while ensuring high brightness. Boasting an IP66 protection rating, it features excellent dustproof and waterproof performance, making it suitable for complex environments such as high humidity and dust.



Features:

- Luminous Efficiency up to 180lm/W
- 30W-150W
- CCT: 3000K - 6500K
- UniPed Glare Rating (UGR) < 15, enhancing visual comfort
- Protection Ratings: IP66 + IK08 + 10KV, resistant to extreme weather conditions
- Material: High thermal conductivity die-cast aluminum, featuring strong heat dissipation and stable performance



Code	Watt	Efficacy	Lumen	N.W/pc (kgs)	Dimensions(mm)
D15-50W	30W-50W	160lm/W	4800-8000 lm	1.7	φ152*150
D15-80W	60W-100W	160lm/W	9600-16000 lm	1.9	φ152*157
D15-150W	100W-150W	160lm/W	16000-24000 lm	3.2	φ203*201



2026 LED Flood Light / Highmast Light

LED flood lights are designed to brighten large indoor and outdoor spaces with high intensity, wide-area coverage, and low energy consumption.

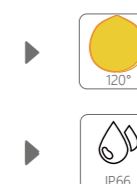


3715 LED Flood Light

Excellent and high-performance,
sturdy and reliable

3715 LED Flood Light

The 3715 is an affordable flood light covering the 30W-200W power range with light efficiency up to 120lm/W. The IP65 protection level can cope with harsh outdoor environments. Breathing valve balances internal and external pressure to ensure longer lamp lifetime. Suitable for lighting outdoor stadiums, courtyards, parks, buildings, etc.



Features:

- Luminous efficiency 120lm/W
- 30W/ 50W/ 70W/ 100W/ 150W/ 200W
- CCT: 3000K; 4000K; 5000K; 5700K; 6500K
- Large heat dissipation area, good heat dissipation effect, long service life of lamps
- surge protection 3KV/6KV

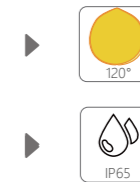
Code	Watt	Efficacy	Lumen	N.W/pc (kgs)	Dimensions(mm)
3715-30W	30W	120lm/W (Ra > 80) 160lm/W (Ra > 70)	3600 lm 4800 lm	0.6	195*190*28
3715-50W	50W	120lm/W (Ra > 80) 160lm/W (Ra > 70)	6000 lm 8000 lm	0.6	195*190*28
3715-100W	100W	120lm/W (Ra > 80) 160lm/W (Ra > 70)	12000 lm 16000 lm	0.7	255*230*40
3715-150W	150W	120lm/W (Ra > 80) 160lm/W (Ra > 70)	18000 lm 24000 lm	1.2	290*255*45
3715-200W	200W	120lm/W (Ra > 80) 160lm/W (Ra > 70)	24000 lm 32000 lm	1.9	345*300*45
3715-300W	300W	120lm/W (Ra > 80) 160lm/W (Ra > 70)	36000 lm 48000 lm	2.7	395*330*50
3715-400W	400W	120lm/W (Ra > 80) 160lm/W (Ra > 70)	48000 lm 64000 lm	6.1	510*430*45



3715B LED Flood Light
Economical, sturdy and reliable

3715B LED Flood Light

3715B is floodlight offers reliable performance at an affordable price, making it an ideal choice for those with a limited budget but without compromising on quality. It has a power range of 50W to 200W and a luminous efficacy of up to 160lm/W. The IP65 protection rating can withstand harsh outdoor environments. The respirator balances the internal and external pressures to ensure a longer lifespan of the lamp. It is suitable for lighting in outdoor sports venues, parking lots and squares, billboard lighting, courtyards, parks, construction sites, etc.



Features:

- Luminous efficiency 160lm/W
- 50W/ 100W/ 150W/ 200W
- CCT: 2700K 4000K; 5000K; 6500K
- Die-cast aluminum heat dissipation features a wide heat dissipation area, excellent heat dissipation performance, and a long service life of the lamps

Code	Watt	Efficacy (Ra > 80)	Lumen	N.W/pc (kgs)	Dimensions(mm)
3715B-50W	50W	160lm/W	8000 lm	1.06	199*189*44
3715B-100W	100W	160lm/W	16000 lm	1.51	273*239*44
3715B-150W	150W	160lm/W	24000 lm	2.38	350*303*44
3715B-200W	200W	160lm/W	32000 lm	3.15	392*343*44

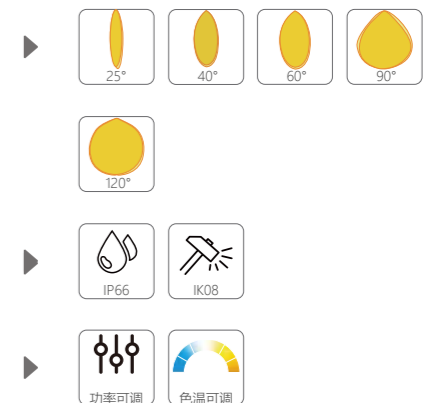


3720 LED Flood Light

Reliable, Long-lasting, Durable,
A high-performance product that meets
the needs of various scenarios

3720 LED Flood Light

3720 is a floodlight covering a power range of 25W to 500W. It features high-quality LED chips with high brightness and professional outdoor optical lenses of various angles to meet long-distance lighting requirements. It has an excellent heat dissipation design, high-quality powder coating and tempered glass, which are anti-corrosive and rust-proof. The end cover junction box design ensures that the main line does not pass through the lamp body, making wiring quick and allowing for series connection. It is easy to install and saves labor costs. It is equipped with a breather to balance the internal and external pressure, ensuring a longer lifespan of the lamp. CCT available are 3000K, 4000K, 5000K, 5700K and 6500K.



3720 Standard style:

Code	Watt	Efficacy (25° 40° 60° 90° 120°)	Lumen	N.W/pc (kgs)	Dimensions(mm)
3720-25W	25W	150lm/W (Ra > 80/70) 180lm/W (Ra > 80/70)	3750 lm 4500 lm	1.7	261*193*126
3720-45W	45W	150lm/W (Ra > 80/70) 180lm/W (Ra > 80/70)	6750 lm 8100 lm	1.7	261*193*126
3720-75W	75W	150lm/W (Ra > 80/70) 180lm/W (Ra > 80/70)	11250 lm 13500 lm	2.6	253*289*162
3720-100W	100W	150lm/W (Ra > 80/70) 180lm/W (Ra > 80/70)	15000 lm 18000 lm	3.0	304*289*162
3720-150W	150W	150lm/W (Ra > 80/70) 180lm/W (Ra > 80/70)	22500 lm 27000 lm	3.6	348*289*165
3720-200W	200W	150lm/W (Ra > 80/70) 180lm/W (Ra > 80/70)	30000 lm 36000 lm	5.2	413*360*205
3720-240W	240W	150lm/W (Ra > 80/70) 180lm/W (Ra > 80/70)	36000 lm 43200 lm	5.3	413*360*205
3720-300W	300W	150lm/W (Ra > 80/70) 180lm/W (Ra > 80/70)	45000 lm 54000 lm	6.1	465*360*205

3720 High-power version:

Code	Watt	Efficacy (25° 40° 60° 90° 120°)	Lumen	N.W/pc (kgs)	Dimensions(mm)
3720-300W	300W	150lm/W (25° 40° 60° 90° 120°) 150lm/W (15°) 180lm/W (25° 40° 60° 90° 120°)	45000 lm 45000 lm 54000 lm	6.1	465*360*205
3720-400W	400W	150lm/W (25° 40° 60° 90° 120°) 150lm/W (15°) 180lm/W (25° 40° 60° 90° 120°)	60000 lm 60000 lm 72000 lm	8.2	479*410*223
3720-500W	500W	135lm/W (10°) 150lm/W (25° 40° 60° 90° 120°) 150lm/W (15°) 180lm/W (25° 40° 60° 90° 120°)	67500 lm 75000 lm 75000 lm 90000 lm	9.0	539*410*223

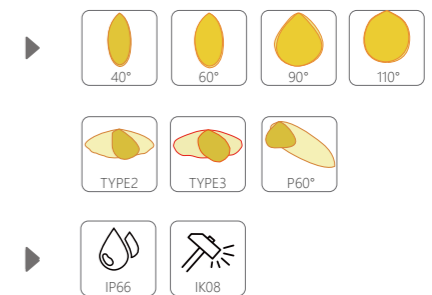


3410 LED Flood Light

Moisture-proof, corrosion-resistant, and rust-proof

3410 LED Flood Light

The 3410 is a high-performance and extremely robust floodlight, available in 150W/300W power options. Its IP66 protection rating and high-strength tempered glass make it suitable for a variety of harsh outdoor environments.



Features:

- Up to 140lm/W
- CCT: 3000K; 4000K; 5000K; 5700K; 6500K
- Equipped with a breather to balance internal and external pressure, ensuring a longer lifespan for the luminaire
- Junction box design for easy wiring and quick installation, reducing labor costs
- Modular design with adjustable bracket for precise illumination of the target area
- Professional optical lens, suitable for various outdoor scenarios
- Excellent heat dissipation design, high-quality powder coating process, anti-corrosion and rust-proof
- Uses tempered glass, offering excellent corrosion resistance and outstanding high-temperature performance

Code	Watt	Efficacy (Ra > 70)	Lumen	N.W/pc (kgs)	Dimensions(mm)
3410-100W	100W	140lm/W	14000 lm	2.8	359*134*152
3410-150W	150W	140lm/W	21000 lm	5.65	377*277*207
3410-300W	300W	140lm/W	42000 lm	8	420*373*207

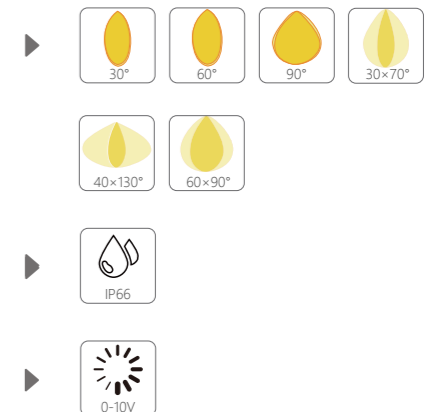


3606 LED Floodlight/High Mast Light

Suitable for various public spaces, creating a clear, safe, and pleasant environment

3606 LED Floodlight/High Mast Light

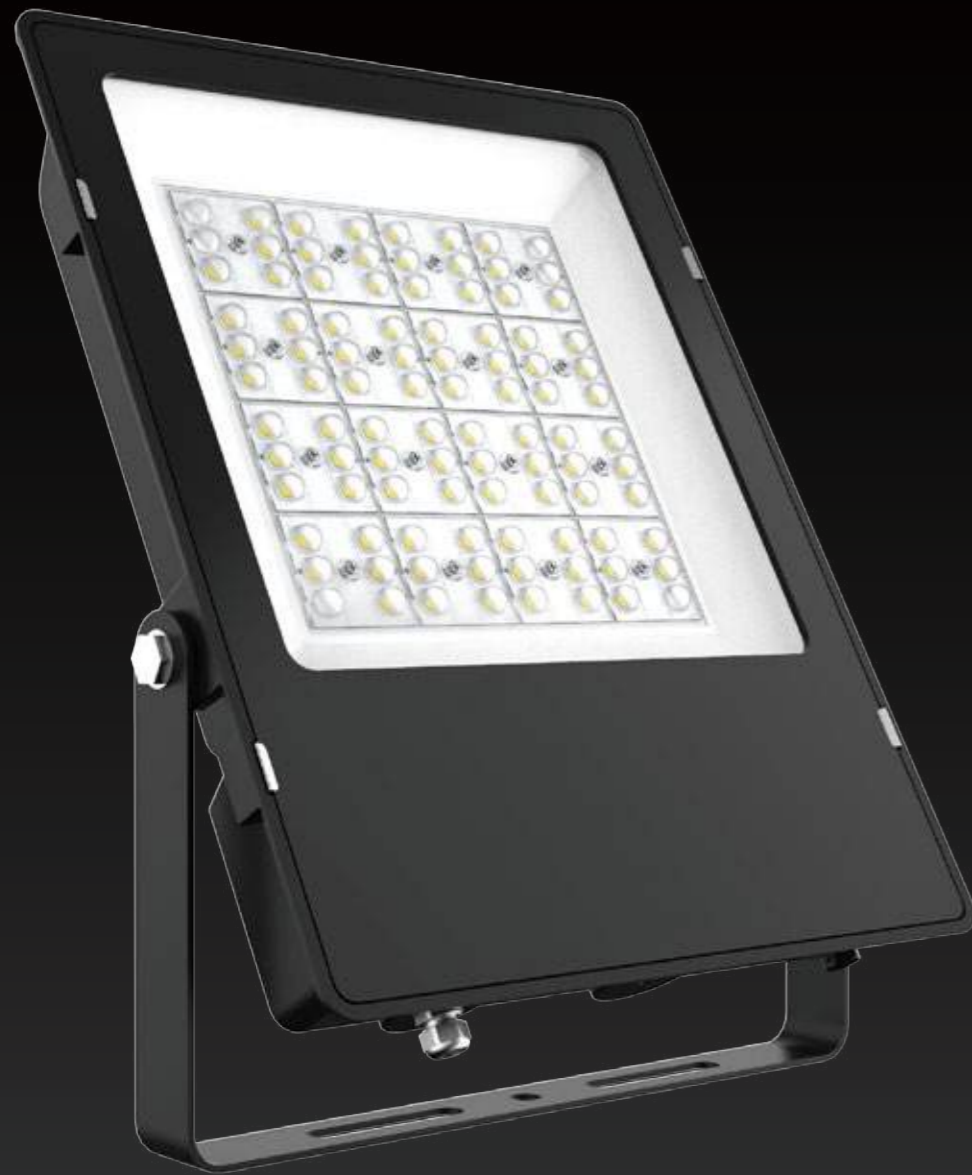
The 3606 floodlight/high-mast light has a power range covering 200W to 600W. Featuring an integrated die-cast design and thickened heat sink, it ensures rapid and even heat dissipation from the light source, resulting in a longer lifespan. It's the ideal lighting solution for various large outdoor lighting applications. The junction box design allows for quick installation.



Features:

- 200W / 300W / 400W / 500W / 600W
- Luminous efficacy up to 150lm/W
- CCT: 4000K/5000K/5700K/6500K
- High-transmittance PC cover
- Best-selling model, reliable and stable quality, high cost-effectiveness
- Complete power range, multiple power options available - Multiple beam angles available to meet diverse customer needs

Code	Watt	Efficacy (Ra > 70)	Lumen	N.W/pc (kgs)	Dimensions(mm)
3606-200W	200W	150lm/W	30000 lm	6	344*358*128
3606-300W	300W	150lm/W	45000 lm	7.4	444*358*128
3606-400W	400W	150lm/W	60000 lm	10.8	546*362*128
3606-500W	500W	150lm/W	75000 lm	12.3	646*362*128
3606-600W	600W	150lm/W	90000 lm	13.7	746*362*128

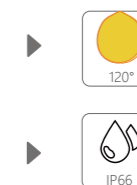


3712 LED Floodlight

Robust, Reliable, and Durable

3712 LED Floodlight

The 3712 floodlight is manufactured with advanced concepts and a special design. Its smooth and simple luminous surface, free of unnecessary fixing components, and exquisite craftsmanship give the 3712 floodlight excellent waterproof performance, reaching IP66 level. With a luminous efficacy of up to 150lm/W and a power range of 10W-300W, it offers both symmetrical and asymmetrical lens options and comes with a variety of mounting accessories. Through a series of rigorous tests and precise cost control, it provides perfect solutions for various applications.



Features:

- Luminous efficacy up to 150lm/W
- CCT: 3000K/ 4000K/5000K/ 5700K
- 340 ° wide-angle adjustable bracket for flexible adjustment of lighting direction
- IP66 professional waterproof rating, sealed design for safe outdoor use
- The entire lamp's heat sink is made of high-quality aluminum alloy for efficient heat dissipation and longer lifespan

Code	Watt	Efficacy (Ra > 80)	Lumen	N.W/pc (kgs)	Dimensions(mm)
3712-50W	50W	110lm/W	5500 lm	0.2	196*188*34
3712-70W	70W	150lm/W	10500 lm	2.5	332*272*60
3712-100W	100W	150lm/W	15000 lm	2.5	332*272*60
3712-150W	150W	150lm/W	22500 lm	3.6	336*292*60
3712-200W	200W	150lm/W	30000 lm	5.7	460*354*60
3712-240W	240W	150lm/W	36000 lm	5.7	460*354*60
3712-300W	300W	150lm/W	45000 lm	7.7	485*412*65



2026 LED Sports Light

LED Sports lights are high-performance lamps specially designed for large-scale lighting needs in sports venues, outdoor sports fields, etc. They must meet strict requirements such as high brightness, uniform illumination, wind resistance and rain protection to ensure that athletes and spectators can enjoy a good visual experience at night.



3622 LED Highmast Light

Durable and long lasting



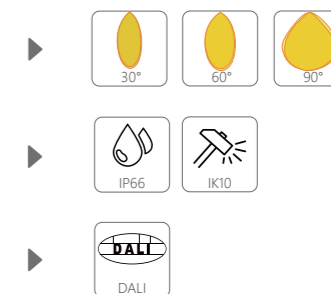
3621



3623

3621/3622/3623 LED Highmast Light

3621/3622/3623 LED floodlight features an outstanding luminous efficacy of 180lm/W, saving energy and electricity. One-piece die-casting, thickened heat sink, rapid and uniform heat dissipation of the light source, longer service life, thickened U-shaped bracket, gear buckle design, adjustable Angle at will, tight and non-slip. The multi-lens angles of 30° /60° /90° meet the requirements of different scenarios. It is widely used in indoor and outdoor courts, tunnels, industrial parks, parks, construction sites, squares, etc.



Features:

- Excellent Luminous Efficiency 180lm/W
- 3621-100W; 3622-200W; 3623-300W
- CCT: 3000K 4000K; 5000K; 5700K
- Multiple light-emitting angles are available to meet the diverse needs of customers
- Thickened U-shaped bracket, gear buckle design Angle can be adjusted at will, tight and non-slip
- One-piece die-casting, thickened heat dissipation ribs quickly and evenly dissipate the heat generated by the light source, extending the service life

Code	Watt	Efficacy (Ra > 70)	Lumen	N.W/pc (kgs)	Dimensions(mm)
3621	100W	180lm/W	18000 lm	3.2	253*339*100
3622	200W	180lm/W	36000 lm	4	306*339*100
3623	300W	180lm/W	54000 lm	5.4	416*339*107



3626 LED Highmast Light

Durable and long lasting



3624

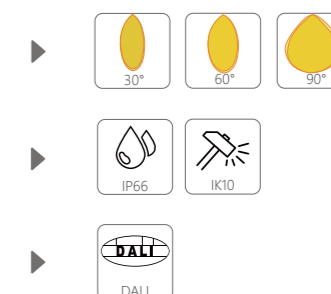
3624/3626 LED Highmast Light

3624/3626 LED floodlight features an outstanding luminous efficacy of 180lm/W, saving energy and electricity. One-piece die-casting, thickened heat sink, rapid and uniform heat dissipation of the light source, longer service life, thickened U-shaped bracket, gear buckle design, adjustable Angle at will, tight and non-slip. The multi-lens angles of 30° /60° /90° meet the requirements of different scenarios. It is widely used in indoor and outdoor courts, tunnels, industrial parks, parks, construction sites, squares, etc.

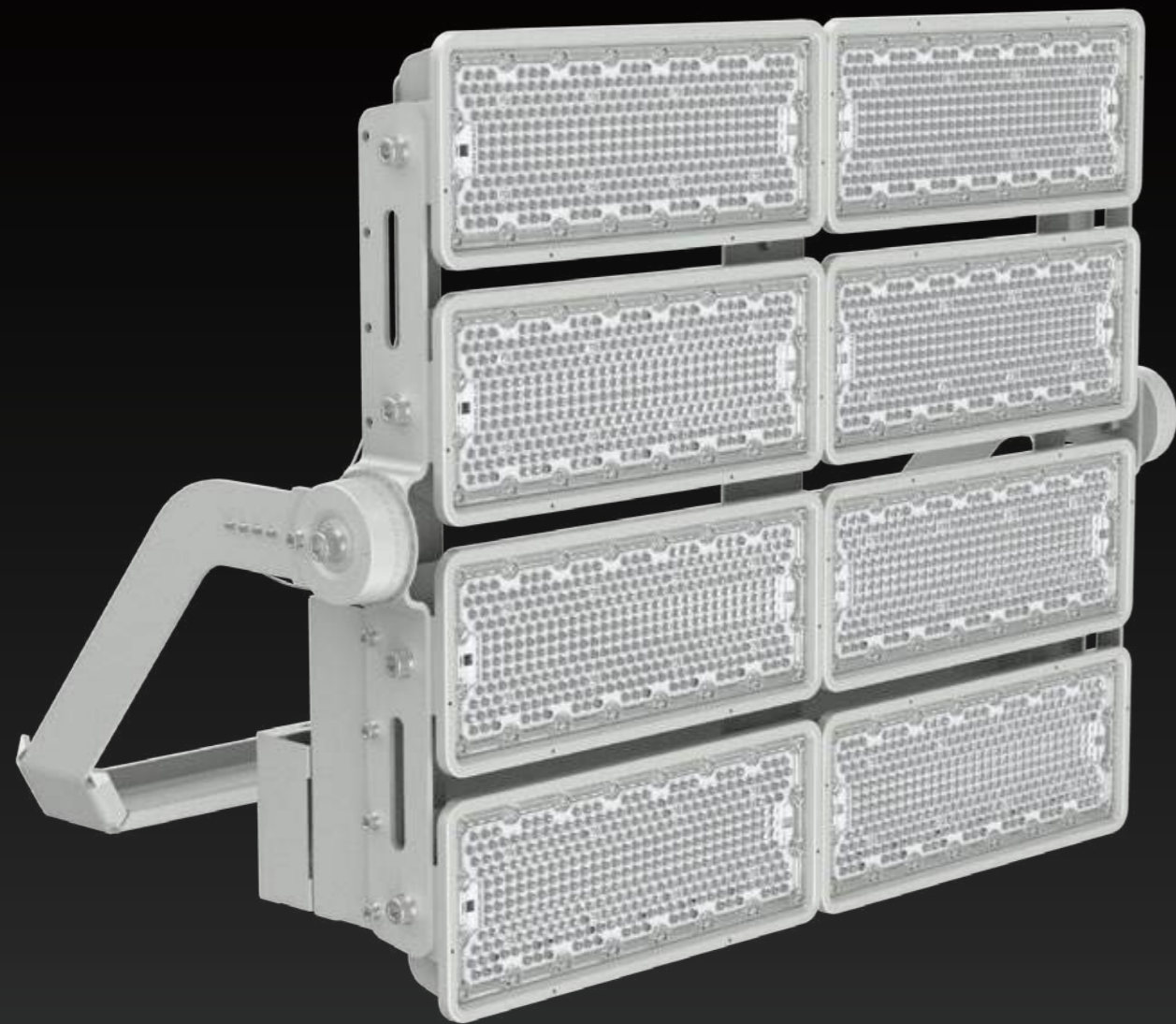


Features:

- Excellent Luminous Efficiency 180lm/W
- CCT: 3000K 4000K; 5000K; 5700K
- Multiple light-emitting angles are available to meet the diverse needs of customers
- Thickened U-shaped bracket, gear buckle design Angle can be adjusted at will, tight and non-slip
- One-piece die-casting, thickened heat dissipation ribs quickly and evenly dissipate the heat generated by the light source, extending the service life



Code	Watt	Efficacy (Ra > 70)	Lumen	N.W/pc (kgs)	Dimensions(mm)
3624	400W	160lm/W	64000 lm	11.8	647*403*100
		180lm/W	72000 lm		
3624	600W	150lm/W	90000 lm	11.8	647*403*100
3626	600W	160lm/W	96000 lm	14.9	853*403*106
		180lm/W	108000 lm		
3626	800W	150lm/W	120000lm	14.9	853*403*106

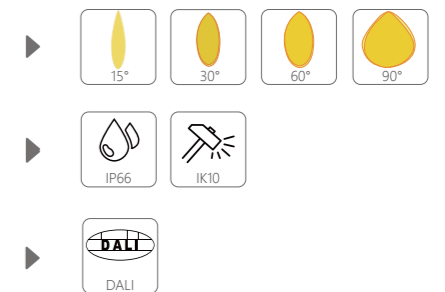


FS200 Flood Light

Clear vision, ultimate safety

FS200 LED Flood Light

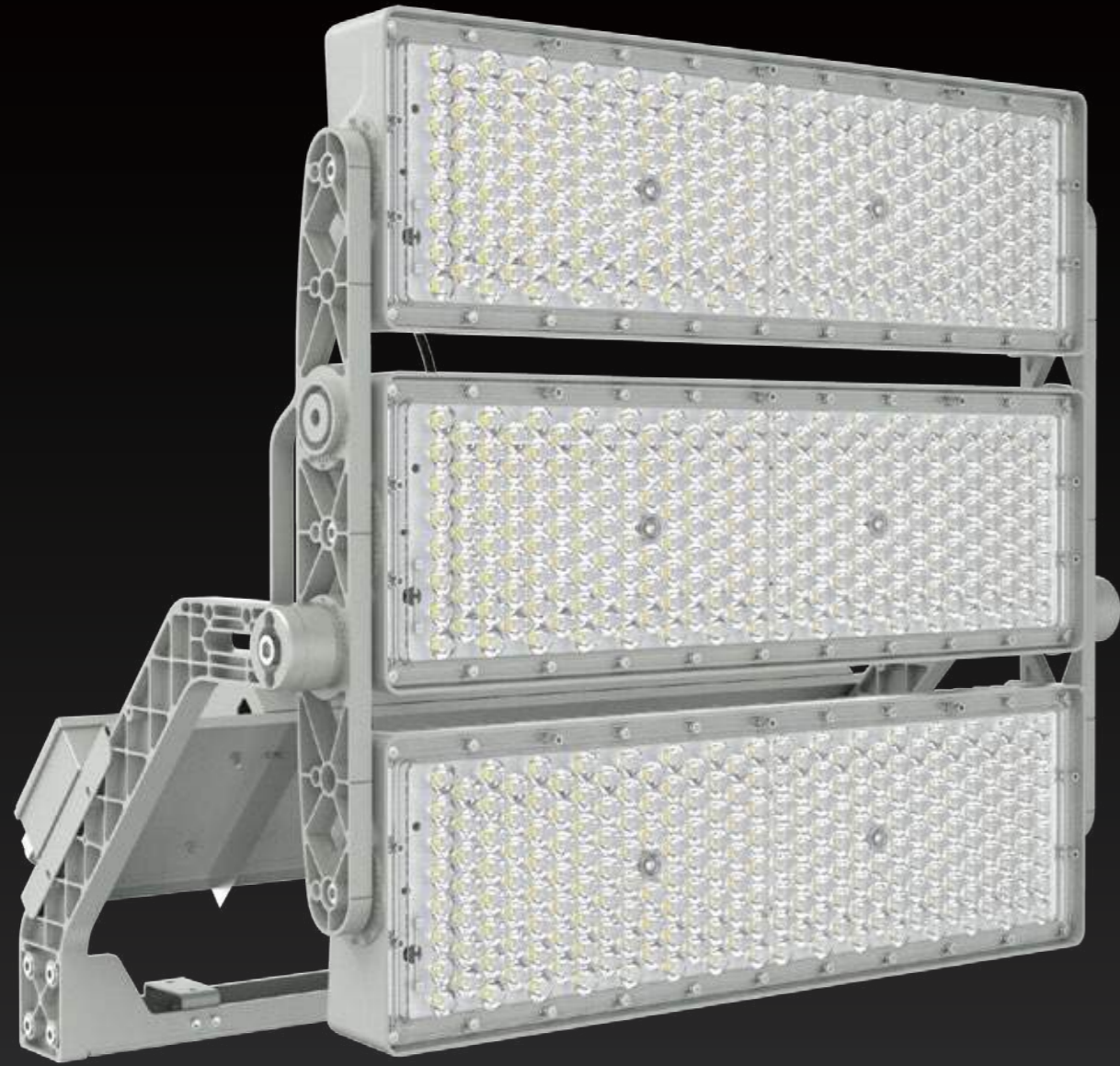
The FS200 flood light has a power range covering 200W to 2000W. One-piece die-casting, thickened heat sink, rapid and uniform heat dissipation of the light source, longer service life, adjustable module Angle, multiple lens angles of 30° /60° /90° to meet the needs of different scenarios. It is widely used in indoor and outdoor courts, tunnels, industrial parks, parks, construction sites, squares, etc.



Features:

- Excellent Luminous Efficiency 160lm/W
- 200W-2000W
- CCT: 3000K 4000K; 5000K; 5700K
- Professional optical lenses suitable for various outdoor lighting applications
- Modular design, with each module adjustable in Angle to meet more lighting requirements
- Power factor PF>0.95, differential mode 6KV/ common mode 10KV lightning surge protection

Code	Watt	Efficacy	Lumen	N.W/pc (kgs)	Dimensions(mm)
FS200-200W	200W-250W	160lm/W	32000 lm-40000lm	4.2	286*423*138
FS200-400W	400W-500W	160lm/W	64000 lm-80000lm	6.4	495*535*208
FS200-600W	600W-750W	160lm/W	96000 lm-120000lm	9.5	678*511*208
FS200-800W	800W-1000W	160lm/W	128000 lm-160000lm	11.8	633*394*208
FS200-1500W	1000W-1500W	160lm/W	160000 lm-240000lm	32	914*671*208
FS200-2000W	1600W-2000W	160lm/W	256000 lm-320000lm	38	932*845*208

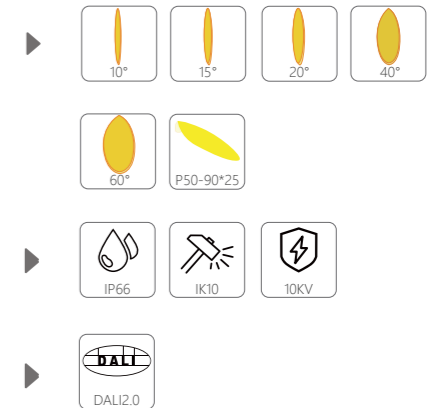


S5 LED Sports Light

Peak lighting effects, durability benchmark, shining for victory!

S5 LED Sports Light

The S5 is specially designed for stadium event lighting. With an ultra-high luminous efficacy of 160lm/W and a powerful output of 1500W, it illuminates every corner of the stadium, making passion nowhere to hide! The S5 series sports venue lights meet the requirements of professional sports lighting for live TV broadcasts and reach TLCI and HDTV standards. The color rendering index is Ra>90, the film and television lighting index TLCI>90, and the color tolerance SDCM<3, providing excellent light and color consistency. It can be applied to football fields, basketball courts, rugby fields and baseball fields in large sports venues. Multi-functional sports venue Outdoor performance/event venues, etc



Features:

- Up to 160lm/W
- 500W/ 1000W/ 1500W
- Color temperature: 4000K-5700K
- Professional optical lens angles, precisely matching the requirements of different scenarios
- High color rendering index, reproducing true colors, suitable for TV broadcasting
- Equipped with intelligent drive, DMX RDM/ DALI2.0
- A reflector is optional

Code	Watt	Efficacy (Ra > 90/80)	Lumen	N.W/pc (kgs)	Dimensions(mm)
S5-500W	500W	160lm/W	80000 lm	13.2	690*440*155
S5-1000W	1000W	160lm/W	160000 lm	24	875*760*215
S5-1500W	1500W	160lm/W	240000 lm	30	945*760*215

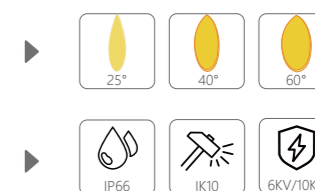


T35C LED Sports Light

Exquisite and durable

T35C LED Sports Light

The T35C is a new product released by Honor in 2025. It features a power of 400W/500W and an ultra-high luminous efficiency of 180lm/W, ensuring no blind spots in lighting. It is applicable to sports facilities such as football fields, basketball courts, tennis courts, badminton courts, as well as outdoor multi-purpose stadiums, large training bases, school sports fields, etc.



Features:

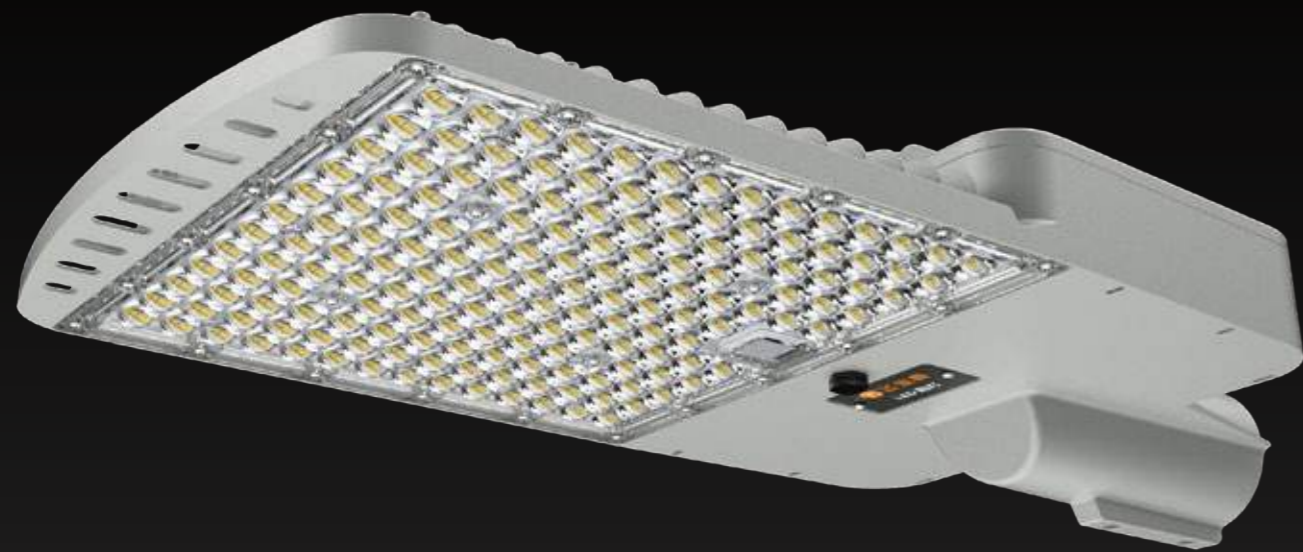
- Excellent Luminous Efficiency 180lm/W
- 400W/ 500W
- Color temperature: 4000K-6500K
- One-piece die-cast thickened aluminum heat dissipation, high thermal conductivity, good heat dissipation effect
- Professional optical lenses for precise light distribution control. Effectively prevent light from scattering into the air
- With a higher protection level, it can easily handle various complex and harsh lighting environments

Code	Watt	Efficacy (Ra > 70)	Lumen	N.W/pc (kgs)	Dimensions(mm)
T35C-400W	400W	180lm/W	72000 lm	5.2	φ400*219.2
T35C-500W	500W	180lm/W	90000 lm	5.2	φ400*219.2



2026 LED Street Light

The LED street come with a variety of different light distributions to suitable for lighting requirements of all outdoor areas as well as reducing light pollution.

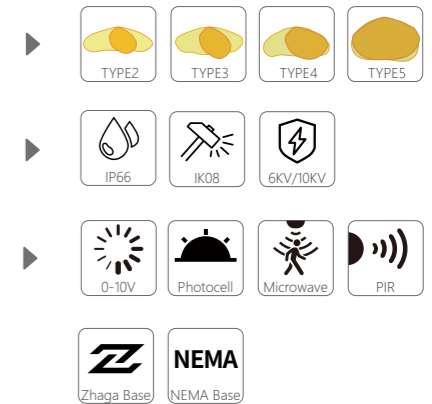


T70 Street Light

Designed specifically for EMC renovation

T70 Street Light

The T70 LED Street Light utilizes high-efficiency light sources to achieve a system luminous efficacy of up to 200 lm/W. Covering a power range from 30W to 260W, it meets various lighting requirements from branch roads to highway mainlines. Featuring IP66 and IK08 ratings along with a wind resistance rating of 17, the luminaire ensures stable operation in harsh environments like typhoons and heavy rain. Ideal for urban roads, campuses, highways, and parking lots, it is a reliable lighting solution that delivers both high efficacy and durability.



Features:

- Luminous efficacy reaches 200 lm/W
- CCT: 3000K-6500K
- Durable and reliable, with a long service life
- The surface has undergone anti-corrosion treatment and passed the WF2 test
- Sleeve mounting, supports 60mm pipe diameter light pole
- Smart control optional
- Tailored for EMC retrofitting, reliable and durable, with comprehensive performance guarantee

Code	Watt	Efficacy (Ra > 70)	Lumen	N.W/pc (kgs)	Dimensions(mm)
T70-60W	30W-80W	160lm/W 200lm/W	4800-12800 lm 6000-16000 lm	2.1	476*160*81.5
T70-120W	60W-120W	160lm/W 200lm/W	9600-19200 lm 12000-24000 lm	2.9	467*190*92
T70-150W	130W-180W	160lm/W 200lm/W	20800-28800 lm 26000-36000 lm	4.0	483*300*108
T70-240W	200W-260W	160lm/W 200lm/W	32000-41600 lm 40000-52000 lm	4.7	583*300*108

T68 Street Light

Rugged, high-performance products



T68 Street Light

The T68 street light is not only compact in structure, but also has a smooth appearance. It is equipped with high-power efficient lamp beads and professional optical lenses, and supports a variety of intelligent control schemes, light efficiency up to 140lm/W, energy saving effect is significant. The street light is mainly suitable for roads, streets, parks, parking lots and other places.



Features:

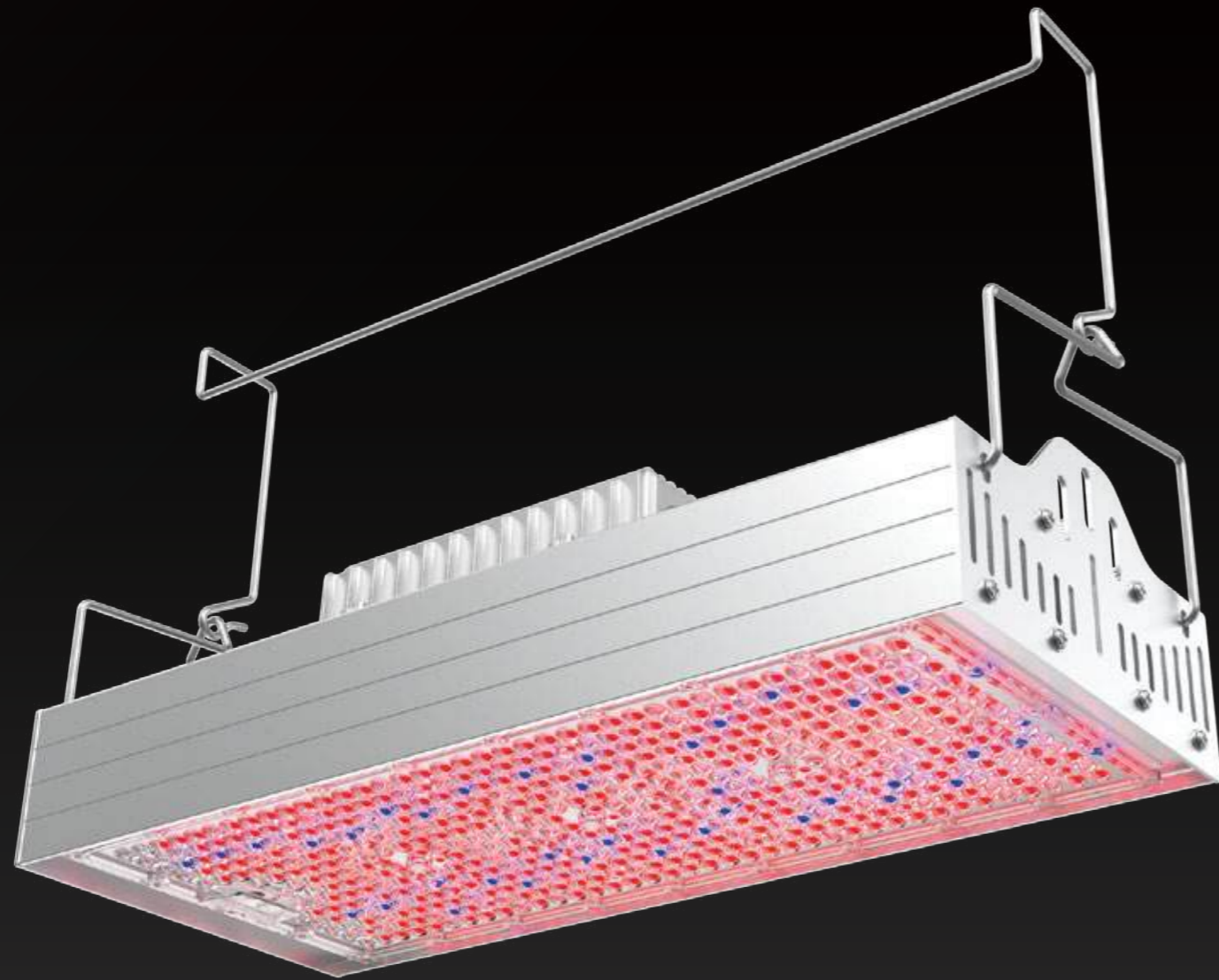
- Strong and reliable, long service life
- With elegant streamlined design, the shell is smooth and not easy to accumulate dust
- Snap-on design for quick installation and maintenance without tools
- Aluminum housing, excellent heat dissipation performance
- Intelligent control optional

Code	Watt	Efficacy (Ra > 70)	Lumen	N.W/pc (kgs)	Dimensions(mm)
T68-30W	30W	140lm/W	4200 lm	5	508*180*109
T68-40W	40W	140lm/W	5600 lm	5	508*180*109
T68-50W	50W	140lm/W	7000 lm	5	508*180*109
T68-60W	60W	140lm/W	8400 lm	6.7	558*258*105
T68-80W	80W	140lm/W	11200 lm	6.7	558*258*105
T68-100W	100W	140lm/W	14000 lm	8.2	608*300*105
T68-120W	120W	140lm/W	16800 lm	8.2	608*300*105
T68-150W	150W	140lm/W	21000 lm	8.2	608*300*105



2026 LED Grow Light

Plant growth lamp is a special kind of lamp, according to the law of plant growth must need sunlight, and plant growth lamp is the use of the principle of sunlight, light instead of sunlight to plant growth and development environment of a lamp. It can effectively save resources and improve the ecological environment.



T860 LED Grow Light

Accelerate growth, save operating costs, and increase production
Maximize your benefits

T860 LED Grow Light

T860 LED growth light power range 600W-1400W, light efficiency up to $3.9\mu\text{mol/J}$, compared to traditional high-pressure sodium lamps, can save 30% energy, and support customized spectral design. It can promote the growth of cannabis, crops, flowers, etc.



Features:

- Power Optional 600W/ 760W/ 1040W/ 1400W
- High Efficiency $3.9\mu\text{mol/J}$
- Full spectrum design
- Support customized spectrum design
- Tool-free quick installation
- Excellent heat dissipation performance
- Intelligent Control
- Switching cycles: 100,000 times

Code	Watt	Efficacy	PPF	N.W/pc (kgs)	Dimensions(mm)
T860-600W	600W	$3.9\mu\text{mol/J}$	$2340\mu\text{mol/s}$	9.3	560*244*161
T860-760W	760W	$3.9\mu\text{mol/J}$	$2964\mu\text{mol/s}$	9.3	560*244*161
T860-1040W	1040W	$3.9\mu\text{mol/J}$	$4056\mu\text{mol/s}$	18.5	1090*244*161
T860-1400W	1400W	$3.9\mu\text{mol/J}$	$5460\mu\text{mol/s}$	18.5	1090*244*161



2026 LED Tunnel Light

Tunnel lighting can improve the road conditions in the tunnel, improve the visual enjoyment in the tunnel, reduce driver fatigue, and help improve the tunnel capacity to ensure traffic safety.

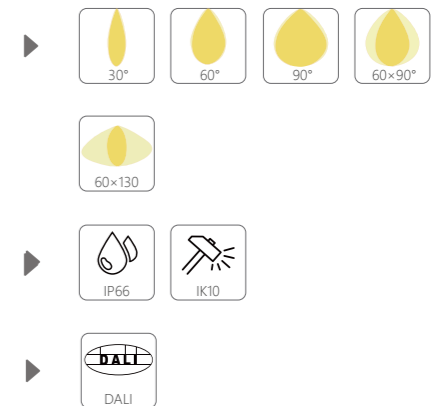
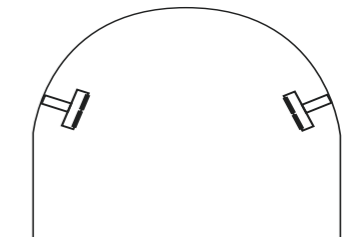


TNC711 Tunnel Light

New upgrade, better performance,
A new choice for high-speed tunnel lighting

TNC711 Tunnel Light

TNC711 tunnel light, with upgraded light efficiency to 160lm/W, further reduce energy consumption, and have the advantages of long life, low energy consumption, and high brightness; This series adopts a glare-free design to reduce the interference of glare on the driver's vision, has high brightness and uniformity, can provide better lighting effects, increase the transparency in the tunnel, make it easier for drivers to see the road and surrounding environment, and improve driving safety.



Features:

- Luminous Efficiency up to 160lm/W
- Power range 20-240W
- Professional optical lenses for tunnel applications
- Surge protection 6KV/10KV
- Lifetime up to 50,000 hours

Code	Watt	Efficacy (Ra > 80)	Lumen	N.W/pc (kgs)	Dimensions(mm)
TNC711-60W	20-60W	160lm/W	3200-9600 lm	1.4	396*111*114
TNC711-110W	70-110W	150lm/W	10500-16500 lm	1.9	525*135*110
TNC711-180W	120-180W	160lm/W	19200-28800 lm	4.2	544*132*107
TNC711-240W	190-240W	150lm/W	28500-36000 lm	3.65	706*146*117

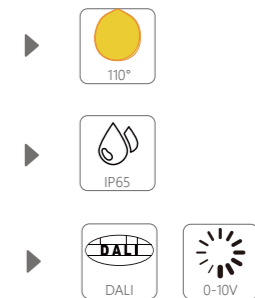
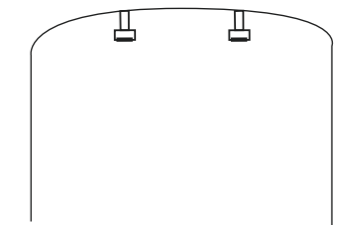


TNC712 LED Tunnel Light

Extraordinary and unique linear appearance

TNC712 LED Tunnel Light

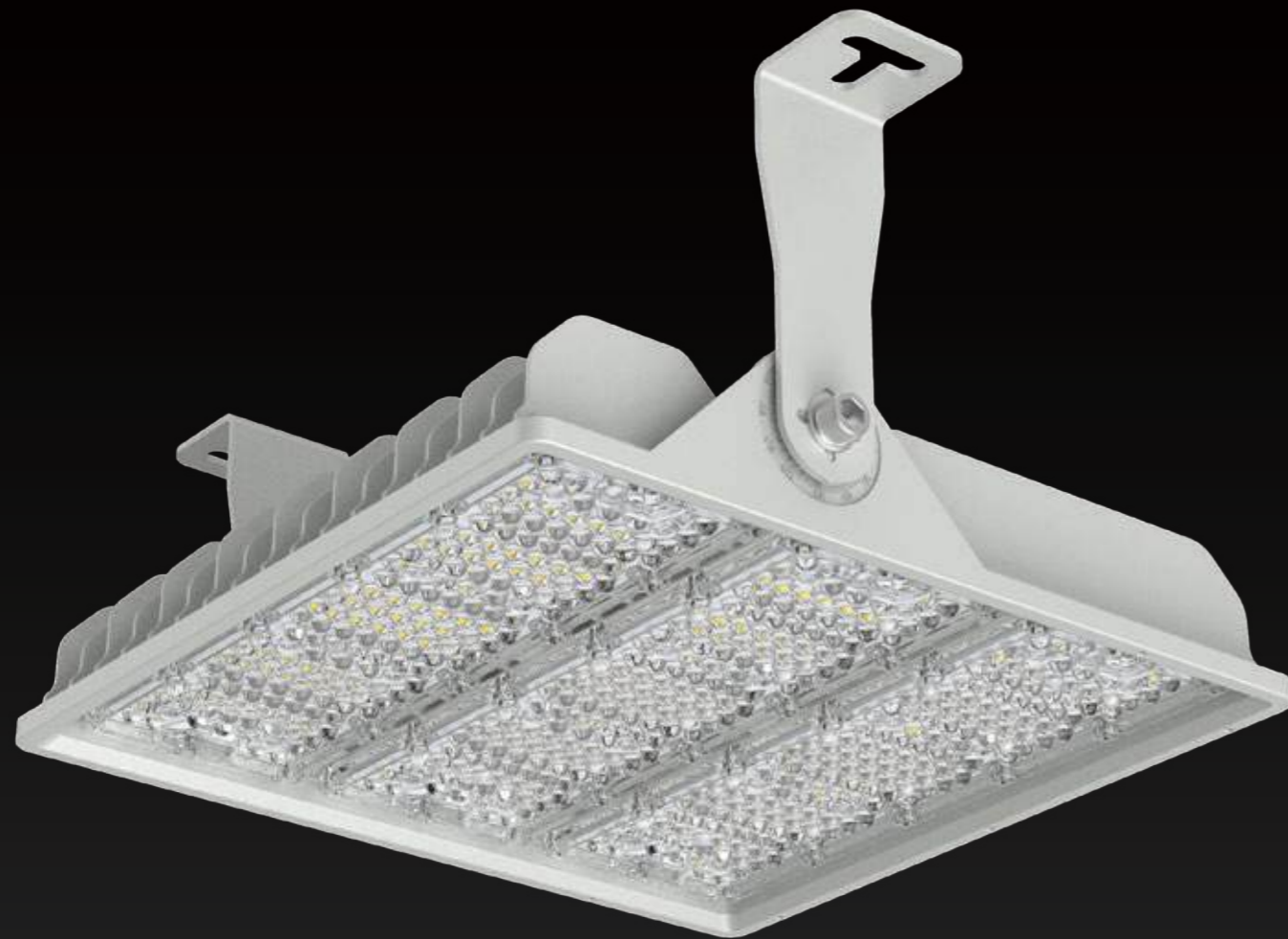
This TNC712 tunnel light body is equipped with a sturdy aluminum casing, which offers excellent heat dissipation. It uses high-efficiency light bulbs to provide extremely high luminous efficiency, which helps save energy and reduce power consumption. The extremely large light-emitting surface and the soft light enhance visual comfort. The PC lens offers different angle options, providing soft and comfortable light, and offering a perfect lighting solution for tunnels, underground passages, underground bridges, traffic tunnels, and other such venues.



Features:

- Luminous Efficiency up to 140lm/W
- 10W - 150W
- CCT: 3000K-6500K
- Professional optical lenses for tunnel applications
- Ra > 80 (70/90 options available)
- High-quality powder coating for corrosion resistance
- IP65 waterproof rating, not afraid of humid environments

Code	Watt	Efficacy (Ra > 80)	Lumen	N.W/pc (kgs)	Dimensions(mm)
TNC712-60W	10-60W	140lm/W	1400-8400 lm	2.4	913*117*69
TNC712-100W	60-100W	140lm/W	8400-14000 lm	2.8	1193*117*69
TNC712-150W	100-150W	140lm/W	14000-21000 lm	3.5	1493*117*69

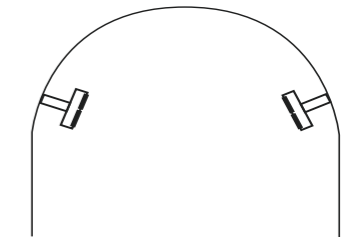


TNC721 LED Tunnel Light

Outstanding quality and reliability
Ensure the safety and good visibility of high-speed tunnels

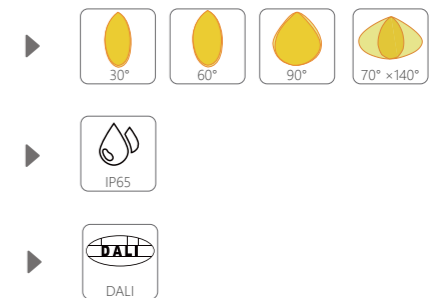
TNC721 LED Tunnel Light

This LED tunnel light boasts an ultra-high luminous efficacy of up to 200lm/W, achieving exceptional cost-effectiveness and significantly reducing energy consumption and maintenance costs. The products cover the power range required for all sections of the tunnel, meeting the different lighting needs of the entrance, middle, and exit sections. Employing specialized optical lenses designed for tunnels, this effectively reduces glare and dark areas, ensuring driving safety. Equipped with 6KV/10KV, IP66 and IK10 ratings, it can withstand strong dust and moisture erosion.



Features:

- Luminous Efficiency up to 200lm/W
- 30W - 320W
- Employing tunnel-specific optical lenses effectively avoids glare and dark areas
- IP66+IK10+6KV/10KV ultra-high protection, fearless of harsh environments.
- Easy to install, L-shaped bracket for ceiling mounting



Code	Watt	Efficacy	Lumen	N.W/pc (kgs)	Dimensions(mm)
TNC721-40W	30W-40W	150lm/W(Ra > 80)	4500-6000 lm	2.5	422*130*167
		200lm/W(Ra > 70)	6000-8000 lm		
TNC721-60W	40W-60W	150lm/W(Ra > 80)	6000-9000 lm	2.5	422*130*167
		200lm/W(Ra > 70)	8000-12000 lm		
TNC721-80W	60W-80W	150lm/W(Ra > 80)	9000-12000 lm	3.5	422*236*167
		200lm/W(Ra > 70)	12000-16000 lm		
TNC721-120W	80W-120W	150lm/W(Ra > 80)	12000-18000 lm	3.5	422*236*167
		200lm/W(Ra > 70)	16000-24000 lm		
TNC721-180W	120W-180W	150lm/W(Ra > 80)	18000-27000 lm	4.5	422*342*167
		200lm/W(Ra > 70)	24000-36000 lm		
TNC721-240W	180W-240W	150lm/W(Ra > 80)	27000-36000 lm	6.0	422*476*167
		200lm/W(Ra > 70)	36000-48000 lm		
TNC721-320W	240W-320W	150lm/W(Ra > 80)	36000-48000 lm	8.5	422*688*167
		200lm/W(Ra > 70)	48000-64000 lm		



2026 LED Explosion-proof Light

The Explosion-proof lamps are used in dangerous places where flammable gases and dust exist, and can prevent the arc, spark and high temperature that may be generated inside the lamp to ignite the flammable gases and dust in the surrounding environment, so as to meet the explosion-proof requirements of the lamps. The explosion-proof grade and explosion-proof form of explosion-proof lamps have different requirements in different combustible gas mixture environments.



DGS50 LED Mining Light

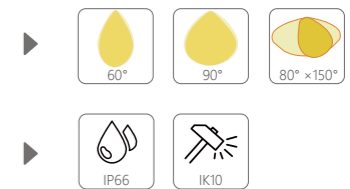
DGS50 LED Mining Light

DGS50 is an explosion-proof light specially designed for underground mine tunnels. High protection levels and > 8mm thick explosion-proof glass make your downhole operations safer. Suitable for a variety of mine laneway.



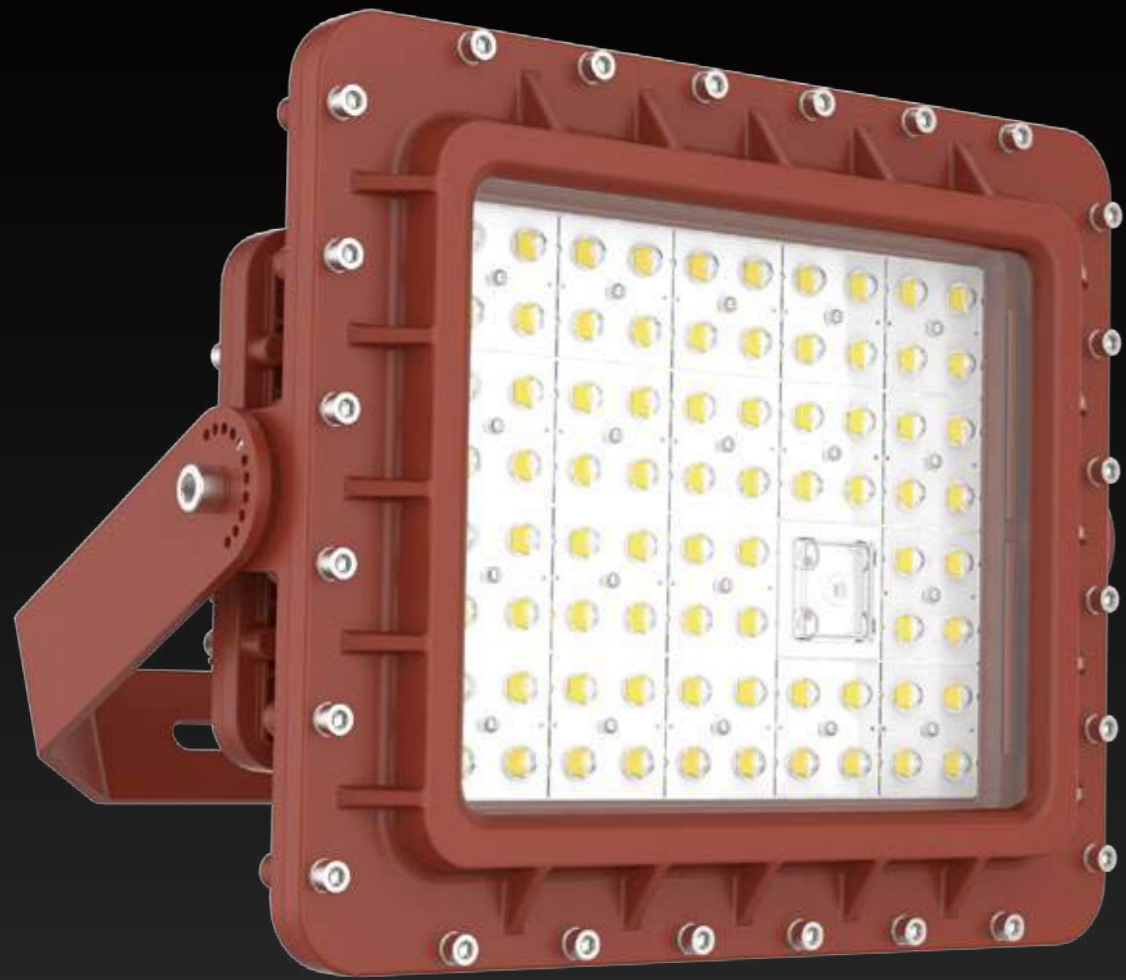
Features:

- 1. The explosion-proof level is high. The whole lamp adopts pure explosion-proof "db" design, which meets the requirements for use in explosion-proof gas zone 1 and dust zone 21.
- 2. The optical design has multiple angles to meet the needs of different scenes, with uniform illumination and soft light;
- 3. High grade explosion-proof glass, thickness $\geq 10\text{mm}$, resistant to drastic changes in heat, meeting the impact strength requirement of 7J;
- 4. Strong vibration resistance, passed 3G vibration test, lamp parts are not easy to fall off, safe and reliable to use;
- 5. Strong wind resistance, passed the level 12 typhoon wind test, the mechanical structure of the lamp is firmly connected, not easy to bend and deform, and the installation is safe and reliable;
- 6. Explosion-proof linkable installation mode to save explosion-proof installation costs;



- 7. High power factor, high grid utilization, dual-stage PFC circuit, flicker-free.
- 8. It has complete explosion-proof certificates and has domestic, European, international and North American explosion-proof certifications.

Code	Watt	Efficacy (Ra > 70)	Lumen	N.W/pc (kgs)	Dimensions(mm)
DGS50-50W	50W	160lm/W	8000 lm	2.85	194*194*91.6



HL101 Explosion-proof & Hazardous Location LED Lights

HL101 | Zones 1,21 & 2,22

Some environments require a higher level of security. The environment can be marked in the event of a fire or explosion due to the presence of flammable gases or vapors, flammable liquids, flammable dust, or fibers that are prone to burning. HL101 is the perfect solution for these dangerous applications. As a first level 1 lamp, it prevents possible power surges and sparks by fixing all wiring inside it can be rod or yoke mounted, using a 360° rotating bracket to increase the flexibility of product installation. It also uses toughened glass to resist corrosion and increase durability.



ATEX

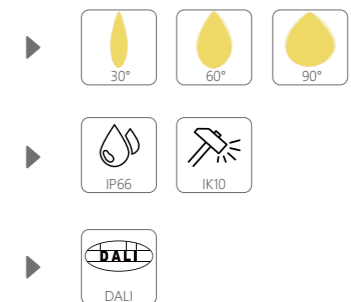
- II 2 G Ex db eb mb IIC T6 Gb (20W-100W)
- II 2 D Ex tb IIIC T80°C Db (20W-100W)
- II 2 G Ex db eb mb IIC T5/T4 Gb (110W-200W)
- II 2 D Ex tb IIIC T95°C /T130°C Db (110W-200W)

IECEx, PCEC:

- Ex d b eb mb IIC T6 Gb (20W-100W)
- Ex tb IIIC T80°C Db (20W-100W)
- Ex db eb mb IIC T5/T4 Gb (110W-200W)
- Ex tb IIIC T95°C /T130°C Db (110W-200W)

Features:

- 20W~200W
- High impact resistance glass > 4J, shell > 7J
- Strong vibration resistance, strong wind resistance
- Installation in series mode, saving labor costs
- High power factor > 0.95



Code	Watt	Efficacy (Ra > 70)	Lumen	N.W/ps (kgs)	Dimensions(mm)
HL101-100W	20W-100W	140±10lm/W	2600-15000 lm	12±0.5	330*265*190
HL101-200W	110W-200W	140±10lm/W	14300-30000 lm	15.3±0.5	385*317*190



HL102 LED Explosion-proof Street Light



Handle installation



Pole installation

HL102 | Zones 2, 21

HL102 is an explosion-proof street lamp specially designed for roads in dangerous areas, with a power range covering 30W-480W, which can be used in oil storage tank areas, petrochemical areas, hazardous chemicals areas, etc



Ambient: -35°C ~+40°C

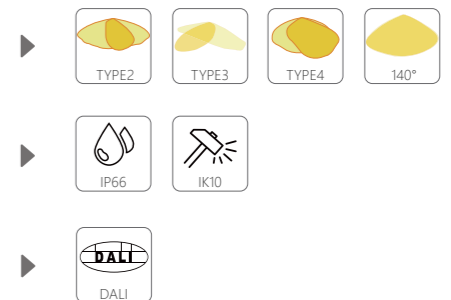
- Ex nR IIC T6 Gc (30W-120W)
- Ex tb IIIC T80°C Db (30W-120W)
- Ex nR IIC T5 Gc (121W-480W)
- Ex tb IIIC T95°C Db (121-480W)

Ambient: -35°C ~+60°C

- Ex nR IIC T4 Gc (30W-120W)
- Ex tb IIIC T130°C Db (30W-120W)
- Ex nR IIC T4 Gc (121W-480W)
- Ex tb IIIC T13°C Db (121-480W)

Features:

- 1. Safe and reliable, it can be used in explosion-proof gas zone 2 and dust zone 21;
- 2. The optical lens is designed with multiple angles to meet the needs of different scenes. The illumination is uniform and the light is soft, meeting the requirements of explosion-proof light aging design;
- 3. Using high-efficiency light source, energy-saving, low consumption and long life;
- 4. Strong vibration resistance, passed 3G vibration test, lamp parts are not easy to fall off, safe and reliable to use;
- 5. Strong wind resistance, passed the level 12 typhoon wind test, the mechanical structure of the lamp is firmly connected, not easy to bend and deform, and the installation is safe and reliable;
- 6. Design heat dissipation ducts with air guide structures to ensure the service life of the LED light source;
- 7. High power factor, high grid utilization, dual-stage PFC circuit, flicker-free;



- 8. It has complete explosion-proof certificates and has domestic, European, international and North American explosion-proof certifications.

Code	Watt	Efficacy (Ra > 70)	Lumen	N.W/pc (kgs)	Dimensions(mm)
HL102-120W (Handle)	30W-120W	150±10lm/W	4200-19200 lm	3.4	328.4*324*65.3
HL102-240W (Handle)	130W-240W	150±10lm/W	18200-38400 lm	4	328.4*364*65.3
HL102-480W (Handle)	260W-480W	150±10lm/W	36400-76800 lm	9.2	658*350*77
HL102-120W (Pole)	30W-120W	150±10lm/W	4200-19200 lm	3.4	298*450*79.5
HL102-240W (Pole)	130W-240W	150±10lm/W	18200-38400 lm	4	298*490*79.5



HL160 LED Linear Fixture for Hazardous Area

HL160 | Zones 1,21 & 2,22

HL160 is a long LED explosion-proof luminaire designed for applications in harsh and dangerous areas, such as oil storage tank areas, petrochemical installation platforms and hazardous chemicals areas, and has passed IECEx, ATEX and other international strict testing standards certification and domestic CNEX explosion-proof testing.



ATEX:

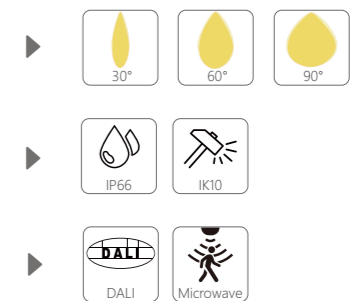
- II 2G Ex eb mb IIC T6/T4 Gb
- II 2D Ex tb IIIC T80°C /T95°C Db

IECEX, PCEC:

- Ex eb mb IIC T6/T4 Gb
- Ex tb IIIC T80°C /T95°C Db

Features:

- luminous Efficiency 160lm/W
- Smart sensor control and Emergency lighting function
- Reliable for most harsh and hazardous environments, passed salt spray test 500H
- Various installations: ceiling mounting, sidewall, pole mounting



Code	Watt	Efficacy(Ra > 70)	Lumen	N.W/pc (kgs)	Dimensions(mm)
HL160-30W	30W	140lm/W (Milky PC Cover) 160lm/W (Clear PC Cover)	4200 lm 4800 lm	3.7	719*116*73
HL160-40W	40W	140lm/W (Milky PC Cover) 160lm/W (Clear PC Cover)	5600 lm 6400 lm	3.7	719*116*73
HL160-40W (Emergency)	40W	140lm/W (Milky PC Cover) 160lm/W (Clear PC Cover)	5600 lm 6400 lm	4	719*116*73
HL160-60W	60W	140lm/W (Milky PC Cover) 160lm/W (Clear PC Cover)	8400 lm 9600 lm	5.8	1205*116*73
HL160-80W	80W	140lm/W (Milky PC Cover) 160lm/W (Clear PC Cover)	11200 lm 12800 lm	5.8	1205*116*73



HL161 LED Explosion-proof Light

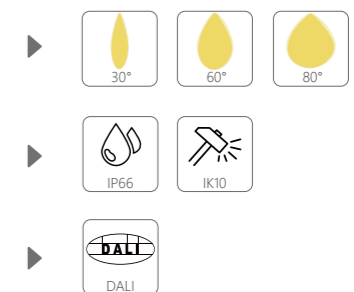
HL161 | Class I Division 1 Group B,C & D T6

HL161 is a long strip explosion-proof lamp designed for harsh environments and hazardous areas, suitable for oil storage tank areas, petrochemical installation platforms and hazardous chemical areas.



UL:

Class I, Division 1, Groups B,C&D T6
Class I, Division 1, Groups B,C&D T4

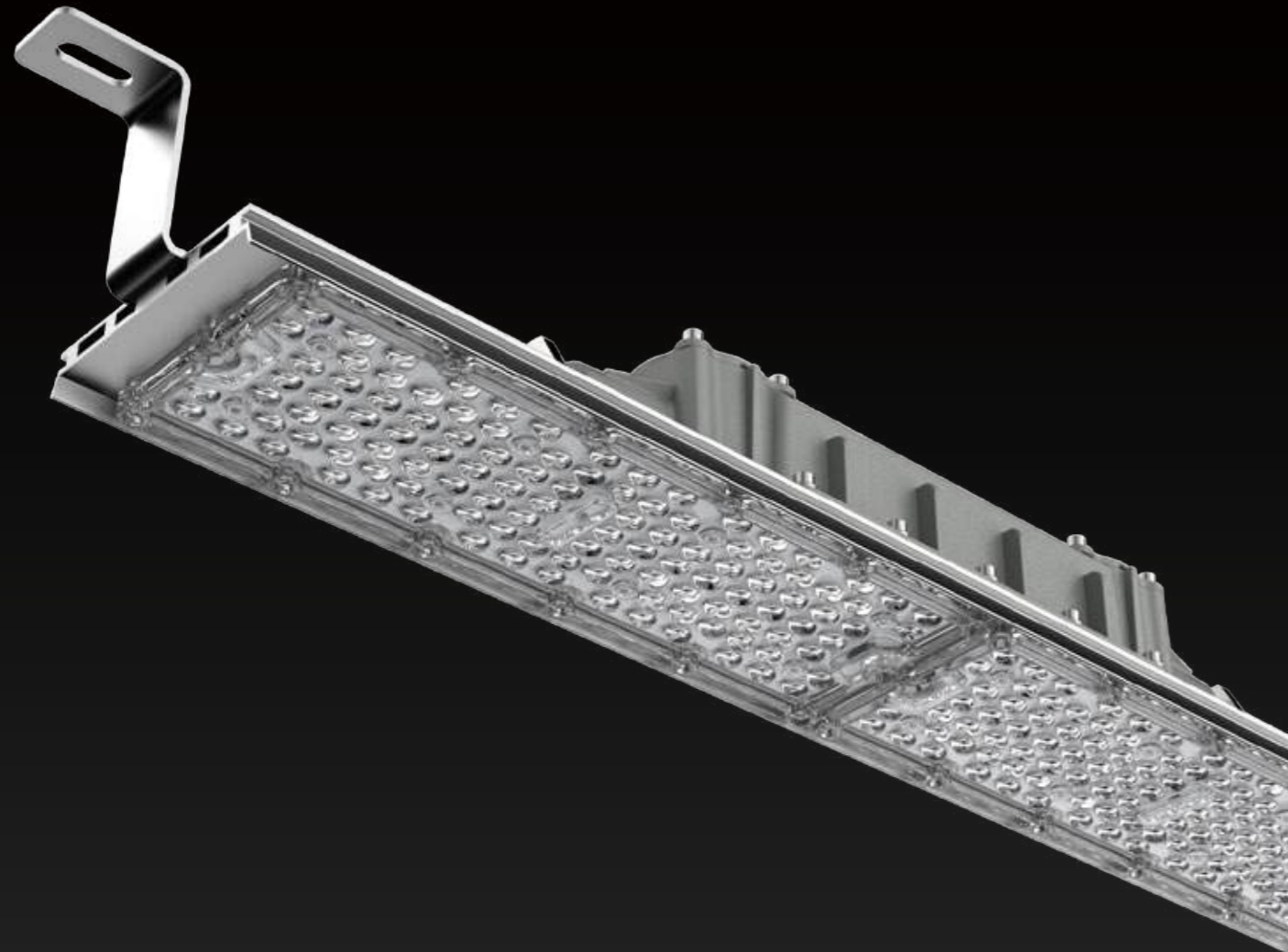


Features:

- 1. The explosion-proof level is high. The whole lamp adopts pure explosion-proof "db" design, which meets the requirements for use in explosion-proof gas zone 1 and dust zone 21.
- 2. The optical design has multiple angles to meet the needs of different scenes, with uniform illumination and soft light;
- 3. High grade explosion-proof glass, thickness $\geq 10\text{mm}$, resistant to drastic changes in heat, meeting the impact strength requirement of 7J;
- 4. Strong vibration resistance, passed 3G vibration test, lamp parts are not easy to fall off, safe and reliable to use;
- 5. Strong wind resistance, passed the level 12 typhoon wind test, the mechanical structure of the lamp is firmly connected, not easy to bend and deform, and the installation is safe and reliable;
- 6. Explosion-proof linkable installation mode to save explosion-proof installation costs;

- 7. High power factor, high grid utilization, dual-stage PFC circuit, flicker-free;
- 8. It has complete explosion-proof certificates and has domestic, European, international and North American explosion-proof certifications.

Code	Watt	Efficacy (Ra > 70)	Lumen	N.W/pc (kgs)	Dimensions(mm)
HL161-40W	20W-40W	140±10 lm/W	2600-6000 lm	6.5	630*136*87
HL161-100W	41W-100W	140±10 lm/W	5330-15000 lm	10.5	1002*136*87



HL162 LED Explosion-proof Light

HL162 | Zones 2,21

HL162 is a reliable and safe long strip explosion-proof lamp, which is suitable for oil storage tank area, petrochemical installation platform, hazardous chemical area, etc.

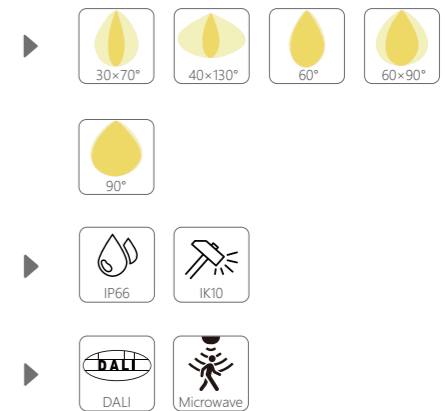


ATEX:
 II 3G Ex nR II C T6 Gc, Zone 2
 II 2D Ex tb III C T80°C Db, Zone 21 & 22

IECEX, PCEC:
 Ex nR II C T6 Gc, Zone 2
 Ex tb III C T80°C Db, Zone 21 & 22

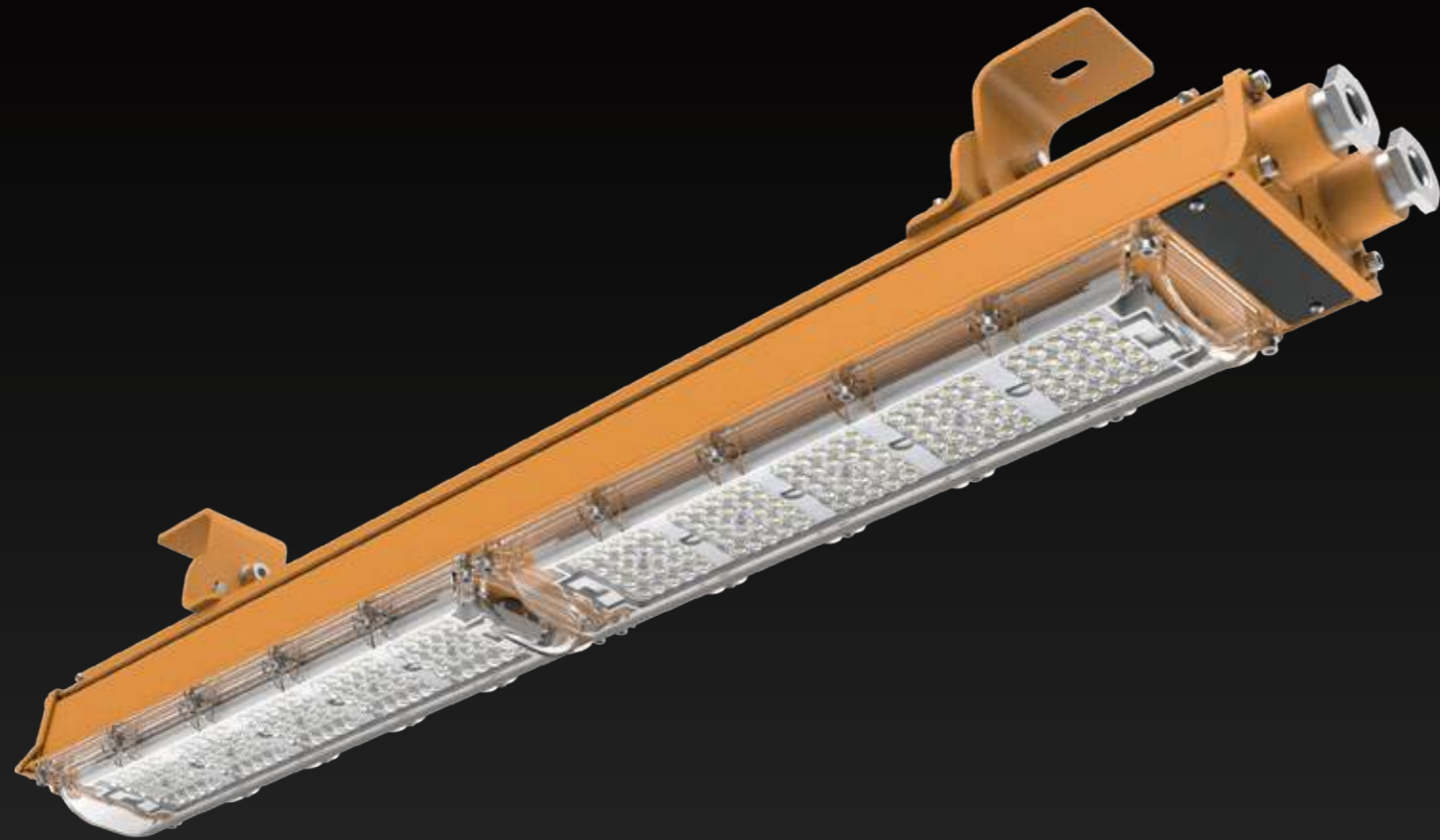
Features:

- 1. Safe and reliable, it can be used in explosion-proof gas zone 2 and dust zone 21;
- 2. The optical lens is designed with multiple angles to meet the requirements of different scenes and avoid most of the light wastage when used in narrow channels. The illumination is uniform and the light is soft, meeting the requirements of explosion-proof light aging design;
- 3. Using high-efficiency light source, energy-saving, low consumption and long life;
- 4. Strong vibration resistance, passed 3G vibration test, lamp parts are not easy to fall off, safe and reliable to use;
- 5. Strong wind resistance, passed the level 12 typhoon wind test, the mechanical structure of the lamp is firmly connected, not easy to bend and deform, and the installation is safe and reliable;
- 6. High power factor, high grid utilization, dual-stage PFC circuit, flicker-free;
- 7. Explosion-proof linkable installation mode to saves explosion-proof installation costs;
- 8. Multiple styles of installation brackets, which can be installed against the wall to adjust the angle, mounted on a round rod with a hoop, or installed flat on the ceiling;



- 9. It has complete explosion-proof certificates and has domestic, European, international and North American explosion-proof certifications.

Code	Watt	Efficacy (Ra > 70)	Lumen	N.W/pc (kgs)	Dimensions(mm)
HL162-40W	40W	150lm/W	6300 lm	2.9	611*106*82
HL162-60W	60W	150lm/W	9600 lm	2.9	611*106*82
HL162-80W	80W	150lm/W	12000 lm	2.9	611*106*82



HL163 LED Explosion-proof Light

HL163 | Zones 1,21 & 2,22

The HL163 Energy-saving linear explosion-proof lights is an energy-efficient, long strip explosion-proof light designed for harsh environments and hazardous areas. It boasts a high energy efficiency of 160lm/W and offers various installation options, making it suitable for oil storage tank areas, petrochemical installation platforms, and hazardous chemical areas.

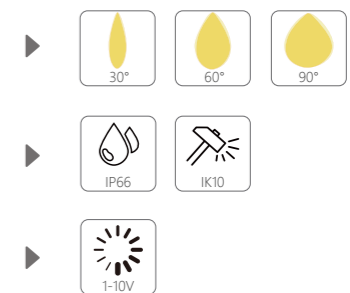


ATEX:

- Ex eb mb IIC T6/T4 Gb
- Ex tb IIIC T80°C /T95°C Db

Features:

- 1. Safe and reliable, it can be used in explosion-proof gas zone 2 and dust zone 21;
- 2. The optical lens is designed with multiple angles to meet the requirements of different scenes and avoid most of the light wastage when used in narrow channels. The illumination is uniform and the light is soft, meeting the requirements of explosion-proof light aging design;
- 3. Using high-efficiency light source, energy-saving, low consumption and long life;
- 4. Strong vibration resistance, passed 3G vibration test, lamp parts are not easy to fall off, safe and reliable to use;
- 5. Strong wind resistance, passed the level 12 typhoon wind test, the mechanical structure of the lamp is firmly connected, not easy to bend and deform, and the installation is safe and reliable;
- 6. High power factor, high grid utilization, dual-stage PFC circuit, flicker-free;
- 7. Explosion-proof linkable installation mode to saves explosion-proof installation costs;
- 8. Multiple styles of installation brackets, which can be installed against the wall to adjust the angle, mounted on a round rod with a hoop, or installed flat on the ceiling;



- 9. It has complete explosion-proof certificates and has domestic, European, international and North American explosion-proof certifications.

Code	Watt	Efficacy (Ra > 70)	Lumen	N.W/pc (kgs)	Dimensions(mm)
HL163	50W	140lm/W(PC Fog blanket) 160lm/W(PC Lens)	7000 lm 8000 lm	4.4	890*113*93



HL180 LED Explosion-proof & Hazardous Location Light

HL180 | Zones 1,21 & 2,22

HL180 is a reliable and safe LED explosion-proof luminaire. Designed for lighting applications in harsh and dangerous areas such as petroleum, chemical gas, dust, and so on, it is a good lighting solution for oil storage tank areas and corridors. High explosion-proof, anti-corrosion grade, suitable for offshore platforms.



ATEX:

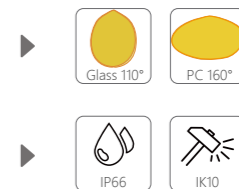
- II 2G Ex db eb mb IIC T6/T4 Gb
- II 2D Ex tb IIIC T80°C /T95°C Db

IECEX、PCEC:

- Ex db eb mb IIC T6/T4 Gb
- Ex tb IIIC T80°C /T95°C Db

Features:

- luminous Efficiency 150lm/W
- Stainless steel bracket and Aksu resistant powder optional for salty harsh condition, strong corrosion resistance.
- Smart sensor control and Emergency lighting function.
- Hanging bracket with gear adjustment plate, stable and firm limit, achieving 180 ° rotation and fixed.



Code	Watt	Efficacy (Ra > 70)	Lumen	N.W/pc (kgs)	Dimensions(mm)
HL180-30W	30W	150lm/W (with glass cover) 130lm/W (with PC cover)	4500 lm 3900 lm	2.5	φ182*141 φ182*200
HL180-50W	50W	150lm/W (with glass cover) 130lm/W (with PC cover)	7500 lm 6500 lm	2.5	φ182*141 φ182*200
HL180-60W	60W	150lm/W (with glass cover) 130lm/W (with PC cover)	9000 lm 7800 lm	2.5	φ182*141 φ182*200
HL180-50W (Emergency)	50W	150lm/W (with glass cover) 130lm/W (with PC cover)	7500 lm 6500 lm	3.7	φ182*163 φ182*222



HL181 LED Explosion-proof & Hazardous Location Light

HL181 | Class I Division 1 Group C & D T5

HL181 is a safe and reliable round explosion-proof lamp. Designed for petroleum, chemical gas, dust and other harsh dangerous areas, is a good oil storage tank area, corridor lighting solution.

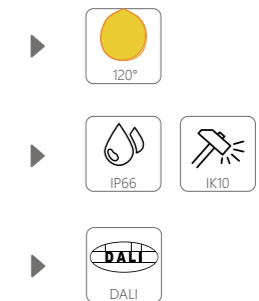


Ambient: $-20^{\circ}\text{C} \leq \text{Ta} \leq +40^{\circ}\text{C}$
 • Class I, Division 1, Groups B,C&D T6
 • Class I, Division 1, Groups B,C&D T5

Ambient: $-20^{\circ}\text{C} \leq \text{Ta} \leq +60^{\circ}\text{C}$
 • Class I, Division 1, Groups B,C&D T6
 • Class I, Division 1, Groups B,C&D T4A

Features:

- 1. The explosion-proof level is high. The whole lamp adopts pure explosion-proof "db" design, which meets the requirements for use in explosion-proof gas zone 1 and dust zone 21.
- 2. Using high-efficiency light source, energy-saving, low consumption and long life;
- 3. High explosion-proof glass, thickness $\geq 8\text{mm}$, resistant to drastic changes in heat, meeting the impact strength requirement of 7J;
- 4. Strong vibration resistance, passed 3G vibration test, lamp parts are not easy to fall off, safe and reliable to use;
- 5. Strong wind resistance, passed the level 12 typhoon wind test, the mechanical structure of the lamp is firmly connected, not easy to bend and deform, and the installation is safe and reliable;
- 6. It adopts IIC level explosion-proof structural design and IP66 protection level sealing design, and has excellent explosion-proof, waterproof, dust-proof and anti-corrosion functions;
- 7. High power factor, high grid utilization, dual-stage PFC circuit, flicker-free;



- 8. It has complete explosion-proof certificates and has domestic, European, international and North American explosion-proof certifications.

Code	Watt	Efficacy (Ra > 70)	Lumen	PCS/CTN (kg)	Dimensions(mm)
HL181	30W-50W	150lm/W	4200-8000 lm	1 / 3.2kg	Ø182×173mm



HL182 LED Explosion-proof Light

HL182 | Zones 2,21

HL182 is a reliable and safe round explosion-proof light. The optical lens adopts multi-angle design to meet the needs of different scenes, with uniform illumination and soft luminous effect. It can be used in oil storage tank area, petrochemical installation platform, hazardous chemical area, etc



Ambient: -35°C ~+40°C

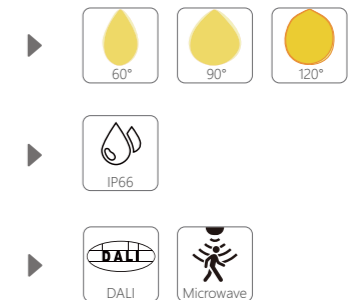
- Ex nR IIC T6 Gc (30W-120W)
- Ex tb IIIC T80°C Db (30W-120W)
- Ex nR IIC T5 Gc (121W-480W)
- Ex tb IIIC T95°C Db (121-480W)

Ambient: -35°C ~+60°C

- Ex nR IIC T4 Gc (30W-120W)
- Ex tb IIIC T130°C Db (30W-120W)
- Ex nR IIC T4 Gc (121W-480W)
- Ex tb IIIC T13°C Db (121-480W)

Features:

- 1. Safe and reliable, it can be used in explosion-proof gas zone 2 and dust zone 21;
- 2. Using high-efficiency light source, energy-saving, low-consumption and long life;
- 3. Strong vibration resistance, passed 3G vibration test, lamp parts are not easy to fall off, safe and reliable to use;
- 4. Strong wind resistance, passed the level 12 typhoon wind test, the mechanical structure of the lamp is firmly connected, not easy to bend and deform, and the installation is safe and reliable;
- 5. Design heat dissipation ducts with air guide structures to ensure the service life of the LED light source;
- 6. It adopts IIC level explosion-proof structural design and IP66 protection level sealing design, and has excellent explosion-proof, waterproof, dust-proof and anti-corrosion functions;
- 7. High power factor, high grid utilization, dual-stage PFC circuit, flicker-free;



- 8. It has complete explosion-proof certificates and has domestic, European, international and North American explosion-proof certifications.

Code	Watt	Efficacy (Ra > 70)	Lumen	N.W/pc (kgs)	Dimensions(mm)
HL182-60W	30W-60W	150±10lm/W	4200-8400 lm	2	φ218*187.2
HL182-120W	70W-120W	150±10lm/W	9800-16800 lm	2.6	φ260*188.7
HL182-120W (Motion sensor)	70W-120W	150±10lm/W	9800-16800 lm	2.6	φ260*194.7
HL182-240W	130W-240W	150±10lm/W	18200-33600 lm	3.6	φ328*191.7
HL182-240W (Motion sensor)	130W-240W	150±10lm/W	18200-33600 lm	3.6	φ328*197.7



HL201 Explosion-proof Light

ATEX ZONE 0 rated rechargeable lantern / scene light

HL201 Portable Type | Zones 0,20 & 1,21 & 2,22

Developed for use in hazardous locations, the HL201 is a portable field lighting fixture, lightweight and rechargeable HL201 is ATEX certified for Zone 0 locations. The use of high impact ABS thermoplastic housing and waterproof construction can be used in harsh operating conditions.



ATEX:

- II 1 G Ex ia IIC T4 Ga
- II 1 D Ex ia IIIC T₂₀₀ 130°C Da

IECEX, PCEC:

- Ex ia IIC T4 Ga
- Ex ia IIIC T₂₀₀ 120°C Da

Features:

- Maximum power 10W, ≥ 1200lm.
- High explosion-proof, ia circuit design, can be used at Zone 0 and Zone 20
- Portable method: handheld or shoulder strap.
- High-capacity battery pack, ultra long endurance, strong light brightness ≥ 10h, low light brightness ≥ 100h.
- One button adjustment of spotlight or floodlight mode to meet different lighting requirement.
- Caution light and buzzer alarm keep warning and ensure safety operation environment.
- 90° swivel neck allows you to aim the beam where you need it.
- High impact, super-tough construction, strong enough for outdoor working.



HL606 Multi-Functional & Portable Explosion-proof Light



HL606 Portable Type | Zones 1,21 & 2,22

The HL606 is a retractable, portable, lightweight explosion-proof lamp. Long service life, concentrating light and flooding light irradiation mode, to meet the needs of the field environment projection or range of irradiation. Users can check the battery level, dimming percentage, and light distribution type through the smart display. This powerful and portable explosion-proof lamp is very suitable for dangerous emergency outdoor working environments, such as oil and gas refineries, chemical and petrochemical facilities, oil field explosion-proof sites, as well as daily small construction, maintenance, emergency rescue operations.



ATEX:

- II 2 G Ex db eb ib mb IIC T6 Gb
- II 2 D Ex tb IIIC T80°C Db

IECEx, PCEC:

- Ex db eb ib mb IIC T6 Gb
- Ex tb IIIC T80°C Db

Features:

- Maximum power 50W, ≥ 6500lm.
- OLED multifunctional display screen, check power level, dimming, beam angle information at any time.
- Two-head lamp design, convenient to rotate 90° vertically and 330 ° horizontally and flexible to aim the beam of lighting to the needed direction.
- Can be folded and folded up, net weight 8kg, convenient carry with hidden handle.
- Solid and foldable tripod legs, workable with wind ropes, well withstand with harsh outdoor working environment.



reddot winner 2023





Shenzhen Grandox Technology Co., Limited

Add: Building E, Jinshan Industrial Park, No. 271 Songming Avenue,
Bao'an District, Shenzhen, Guangdong Province, China

Phone: + 86-18098903632

WhatsApp: +86-18207551335

www.grandoxtech.com

info@grandoxtech.com

sales@grandoxtech.com